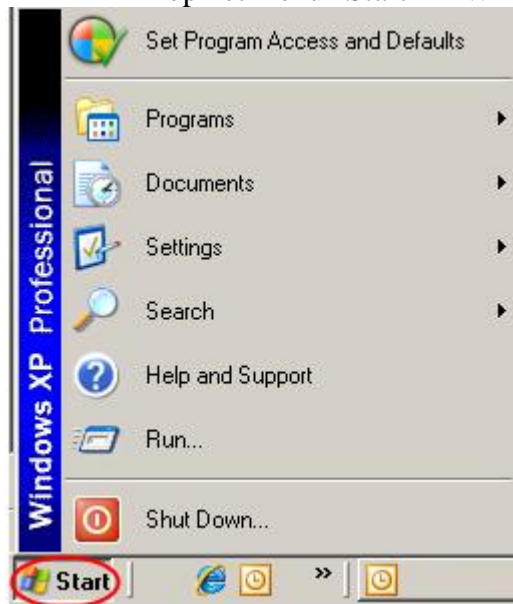
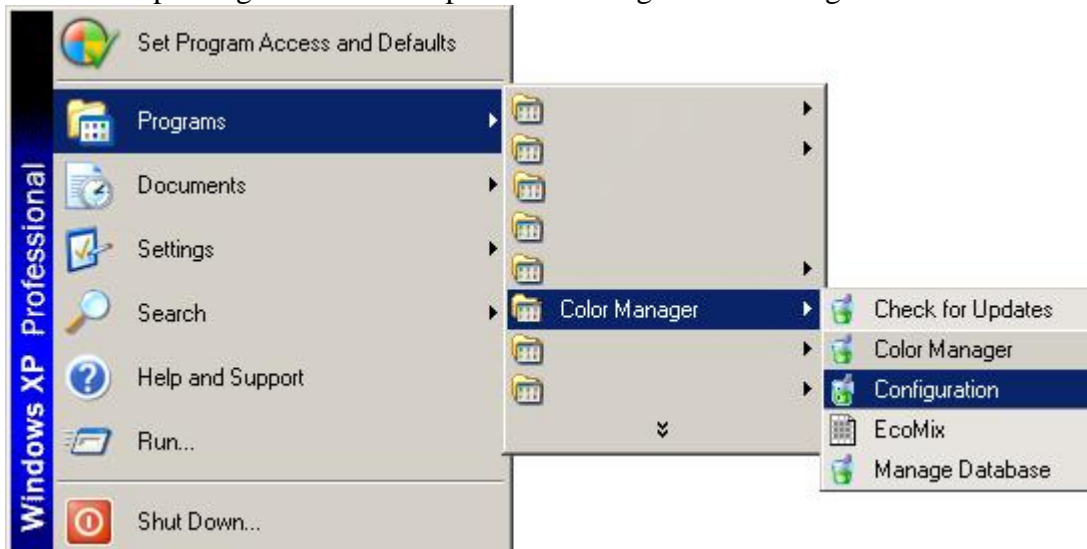


Voor toegang tot uw account volgt u deze eenvoudige stappen:

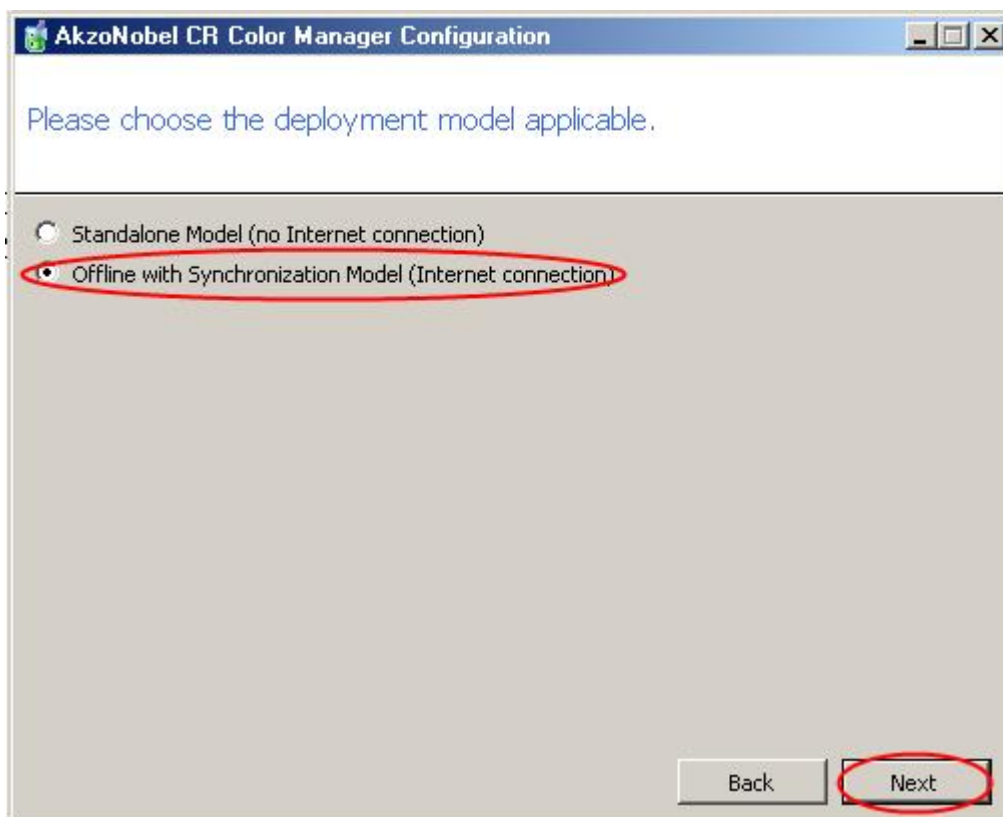
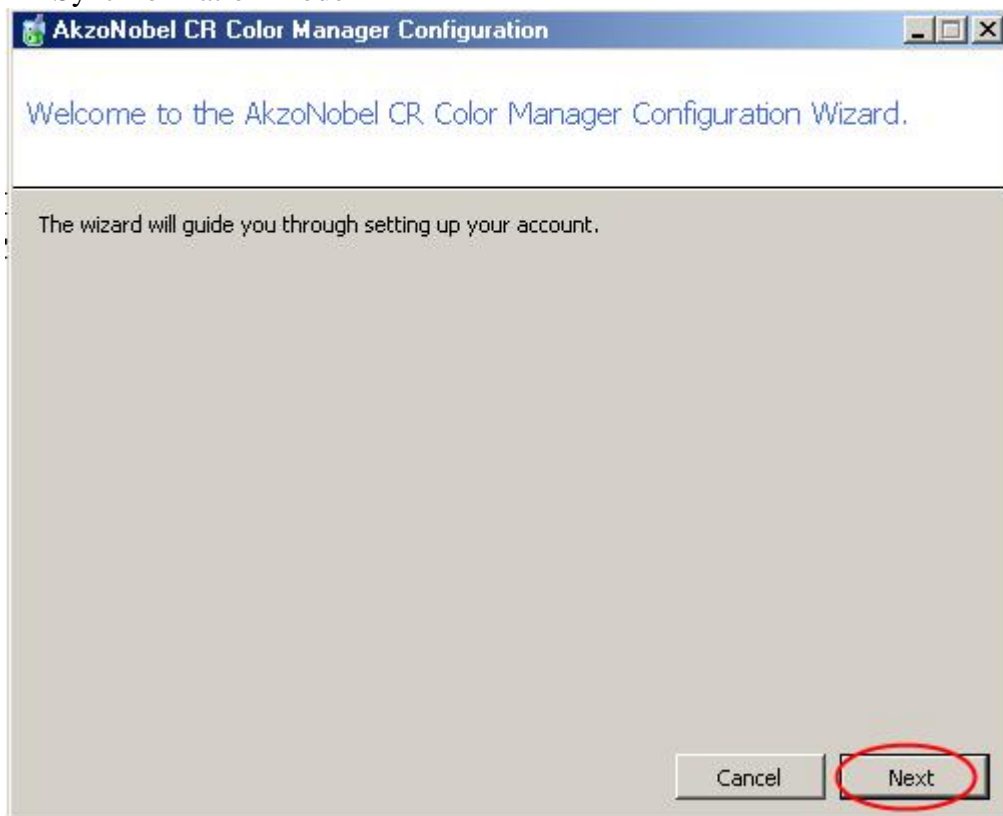
- Klik op het menu "Start" in Windows



- Klik op "Programs" daarna op "Color Manager" en "Configuration"



- Ga verder in het "Configuration Menu" en kies "Next" en "Offline with Synchronization Model"



- Wijzig niets aan uw proxy-instellingen en druk op “Next”

The screenshot shows a window titled "AkzoNobel CR Color Manager Configuration". The main heading is "Configure proxy server settings." Below this, there are two radio button options: "No Proxy Server" (which is selected) and "Use Proxy Server". At the bottom right of the window, there are two buttons: "Back" and "Next". The "Next" button is circled in red.

- Voer uw gebruikersnaam en wachtwoord in in het gedeelte “Enter Account Information” en druk op “Next”

The screenshot shows a window titled "AkzoNobel CR Color Manager Configuration". The main heading is "Enter Account Information." Below this, there are several input fields and informational text. The fields for "Account Number", "Account Password", and "Retype Account Password" are circled in red. The "Account Number" field contains "CR_CUST_*****". The "Account Password" and "Retype Account Password" fields contain "*****". To the right of these fields, there is an information icon and text: "Please reference the 'User Name AkzoNobel Car Refinishes' delivered to you per email. If you are uncertain about the email, please contact your AkzoNobel CR representative." Below these fields, there are two more fields: "Account Brand Key" and "Account Feature Key", both containing "*****". To the right of these fields, there is another information icon and text: "Please reference the 'Mixit Validation Key' delivered to you per email. If you are uncertain about the email, please contact your AkzoNobel CR representative." At the bottom right of the window, there are two buttons: "Back" and "Next".