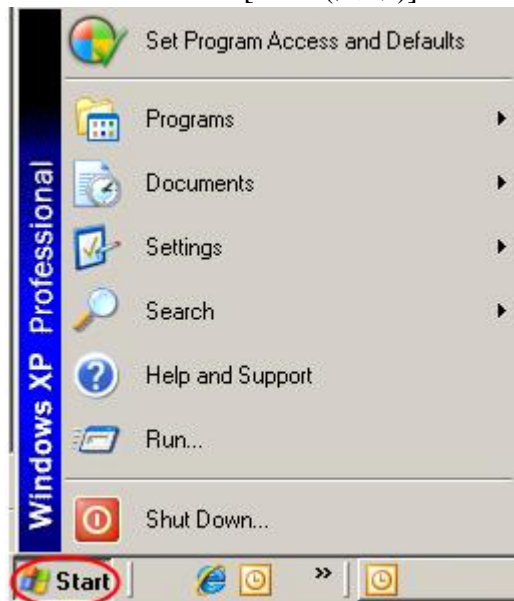
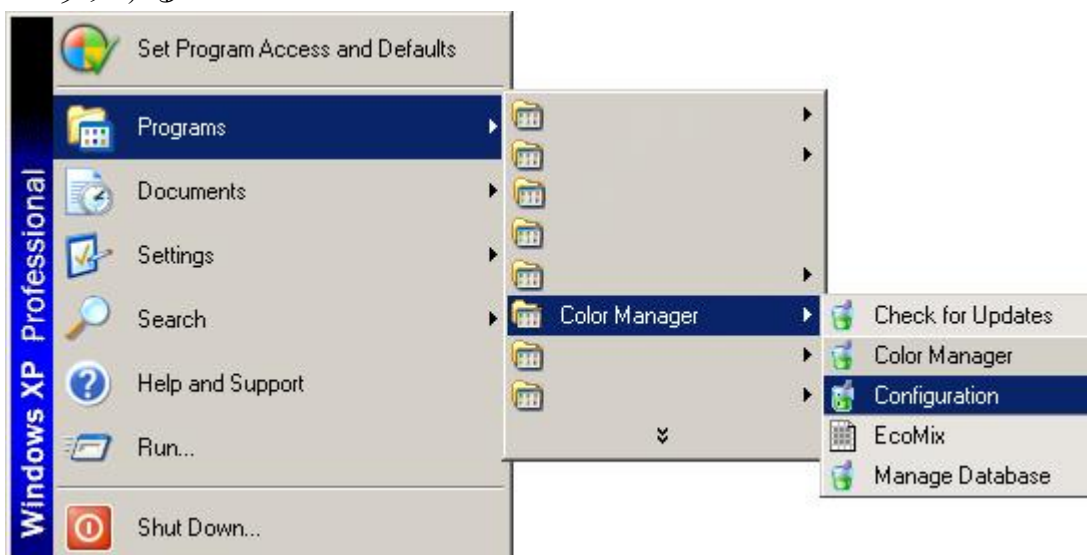


アカウントにアクセスするには、次の簡単な手順を行ってください。

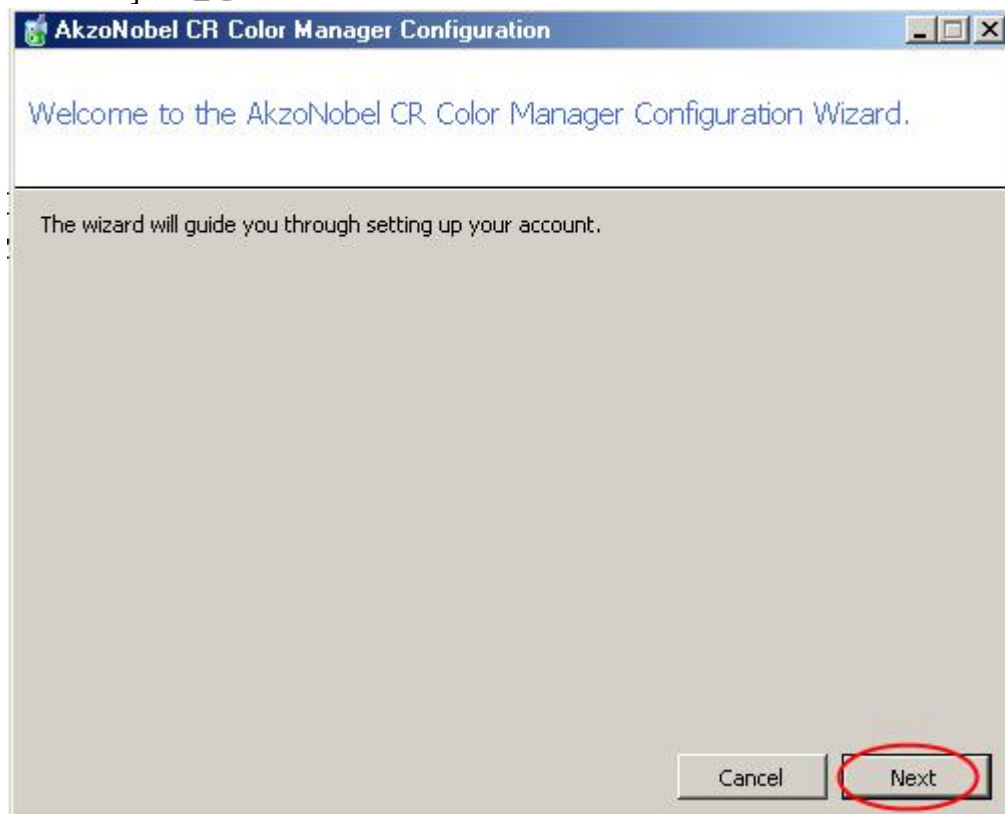
- Windows の [Start (開始)] メニューをクリックする



- [Programs (プログラム)]、[Color Manager]、そして [Configuration] をクリックする



- [Next] と [Offline with Synchronization Model] を選択して、[Configuration Menu] に進む



- プロキシ設定を変更せず、[Next] を押す

AkzoNobel CR Color Manager Configuration

Configure proxy server settings.

No Proxy Server
 Use Proxy Server

Back Next

The 'Next' button is circled in red.

- [Enter Account Information] セクションにユーザー名とパスワードを入力して、[Next] を押す

AkzoNobel CR Color Manager Configuration

Enter Account Information.

Account Number CR_CUST_*****
Account Password *****
Retype Account Password *****

Account Brand Key *****
Account Feature Key *****

Back Next

The account information fields are circled in red.

Please reference the 'User Name AkzoNobel Car Refinishes' delivered to you per email. If you are uncertain about the email, please contact your AkzoNobel CR representative.

Please reference the 'Mixit Validation Key' delivered to you per email. If you are uncertain about the email, please contact your AkzoNobel CR representative.