



# Wings Systems Spółka z o. o.

04-697 Warszawa, ul. Mrówcza 243  
KRS 0000594464, NIP 1132900586

tel: +48 501 782 569  
kontakt@wingssystemy.pl

## MixItLink 1.0.7.0 User Manual

## Table of contents

1	Running the configuration of MixItLink service .....	4
2	Host configuration .....	5
3	Manage Plugins .....	7
4	Run plugins.....	9
4.1	Configuration of Create WO Plugin .....	10
4.2	Configuration of Close WO Plugin .....	12
4.3	Configuration of Export MIX->XML Plugin .....	14
4.4	Configuration of MixItLink WS Plugin .....	16
4.5	Scheduling Plugins.....	17
5	Replacement Codes .....	18
6	Administration .....	20

## Document history

<i>Author</i>	<i>Date</i>	<i>Revision</i>	<i>MixItLink version</i>
Magdalena Bednarska	2018-01-30	1.0	1.0.4.5
Magdalena Bednarska	2018-03-21	1.1	1.0.6.4
Magdalena Bednarska	2018-03-27	1.2	1.0.7.0

## 1 Running the configuration of MixItLink service

After the installation of MixItLink v. 1.0.7.0, new icon on the desktop can be found (*Figure 1.*). MixItLink Cofig can be run by clicking on that icon on the desktop, or from the folder chosen by the installation. MixItLink program package contains also MixItLink Config ADMIN shortcut as well, which allows you to configurate Administration settings.

After running the programme, configuration window is displayed (*Figure 2.*).



Figure 1. MixItLink Config icon

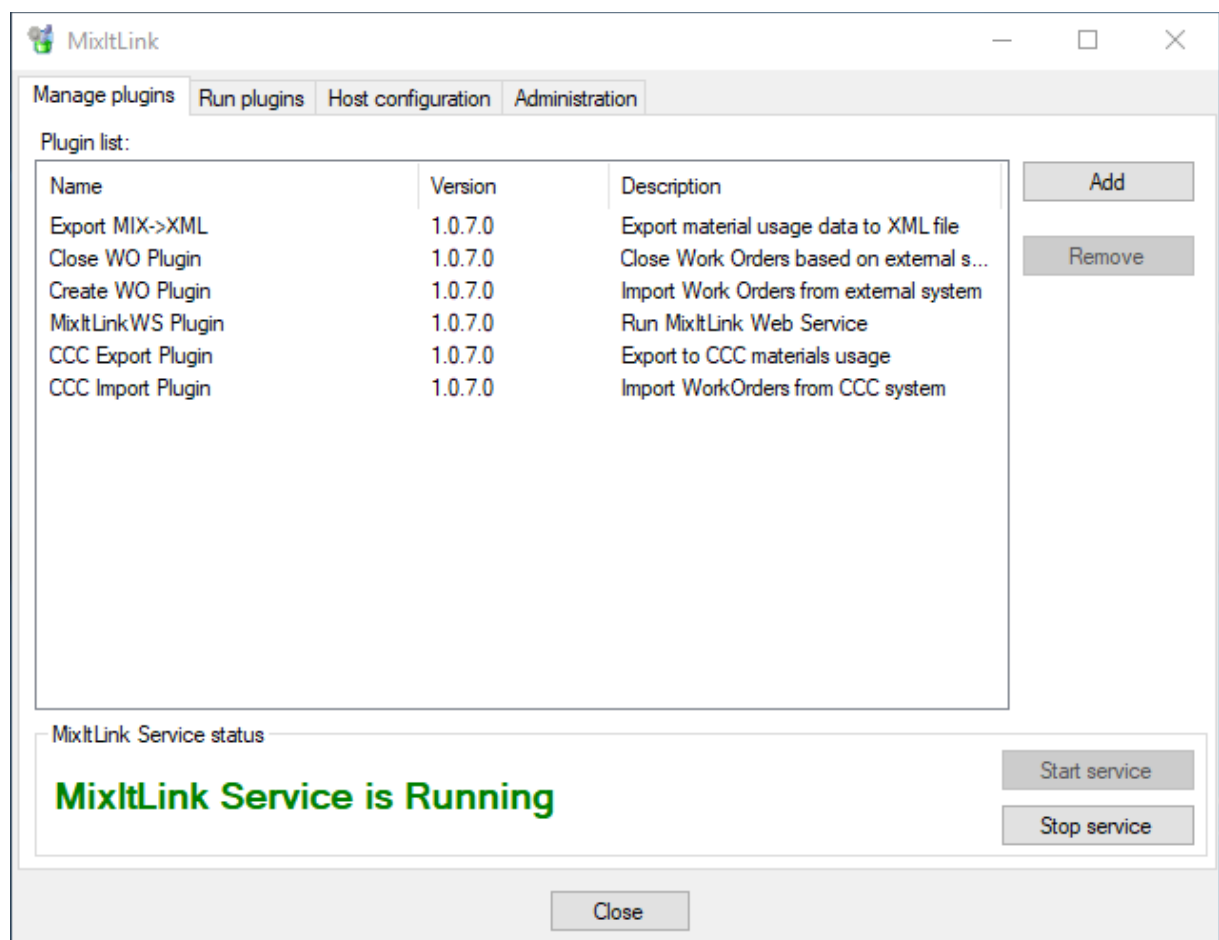


Figure 2. Configuration screen

At the bottom of the screen you can disable, and then rerun MixItLink Service, by clicking “Run service” or “Stop service” button. The information at the bottom shows, if MixItLink Service is running.

## 2 Host configuration

Before beginning plug-ins configuration, you have to set the host configuration (*Figure 3.*) so that there will be successful connection between MixItLink and ColorManager database. You have to enter the IP address or computer name, where the ColorManager database server is, manually (*Marker 1.*), or by using automatic browse engine next to the textbox (*Marker 2.*). Automatic browse may take some time.

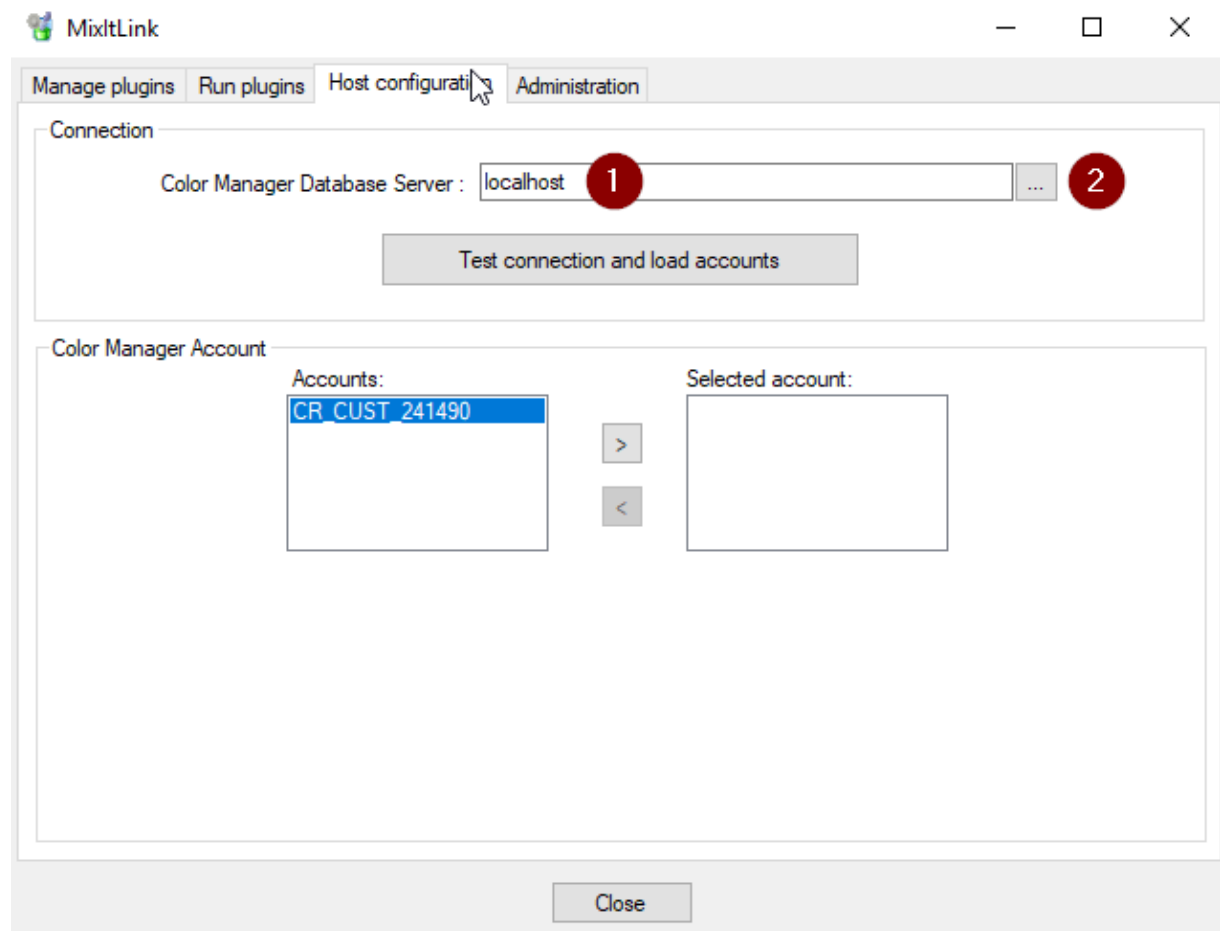


Figure 3. Host configuration – choosing the server

After inserting the location of the server, you can test connection by clicking the button under the textbox. If the connection is successful, the system will display the

confirmation (Figure 4.) and Color Manager Account will be selected automatically, unless you have more than one Color Manager Account. Account won't load automatically, if you have added Color Manager Account before testing connection.

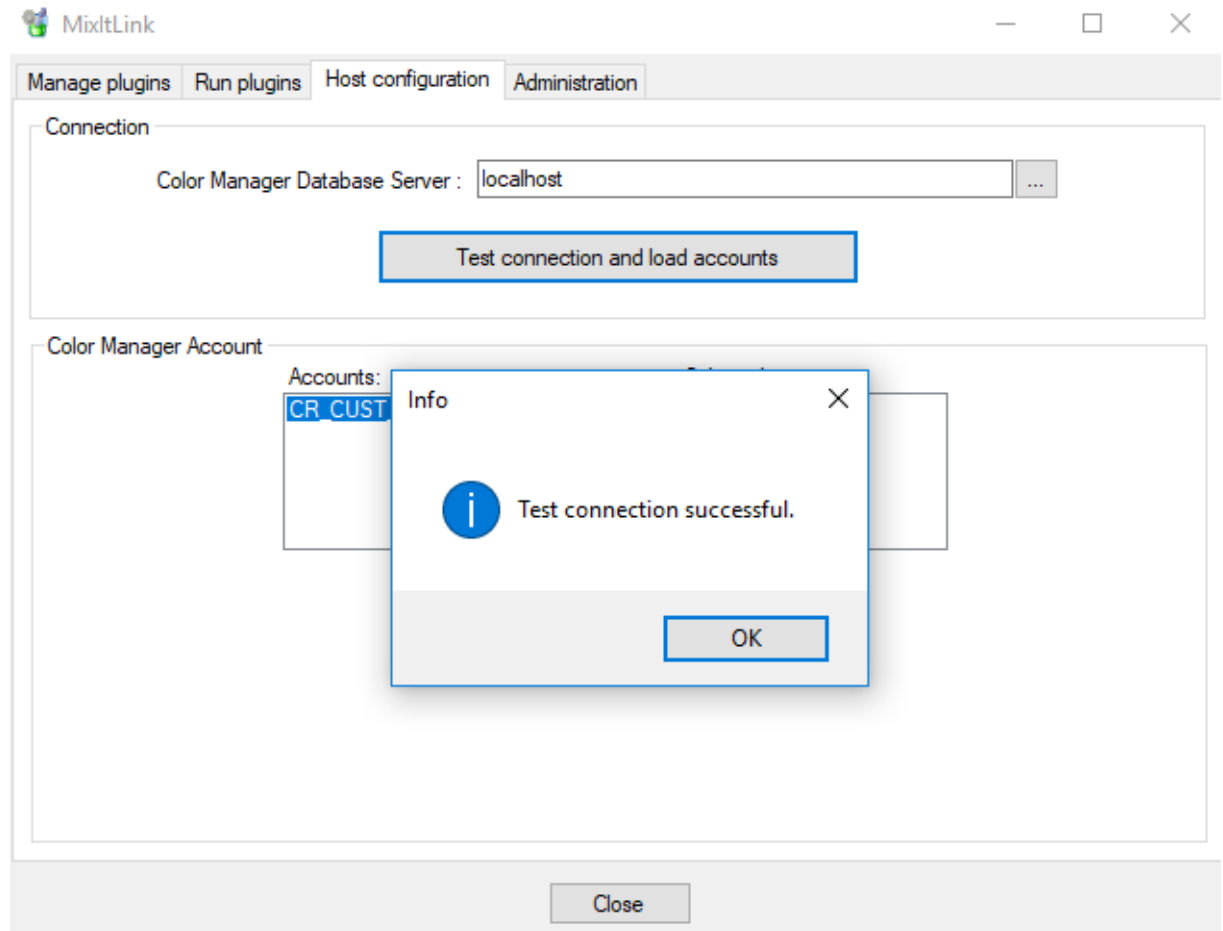


Figure 4. Host configuration – succesful connection

In that case you can also load account manually (Figure 5.). You have to choose account from the left list (Marker 1.) and add it by clicking the top arrow in the middle (Marker 2.). If you want to remove account, select account from the right list and click the bottom arrow.

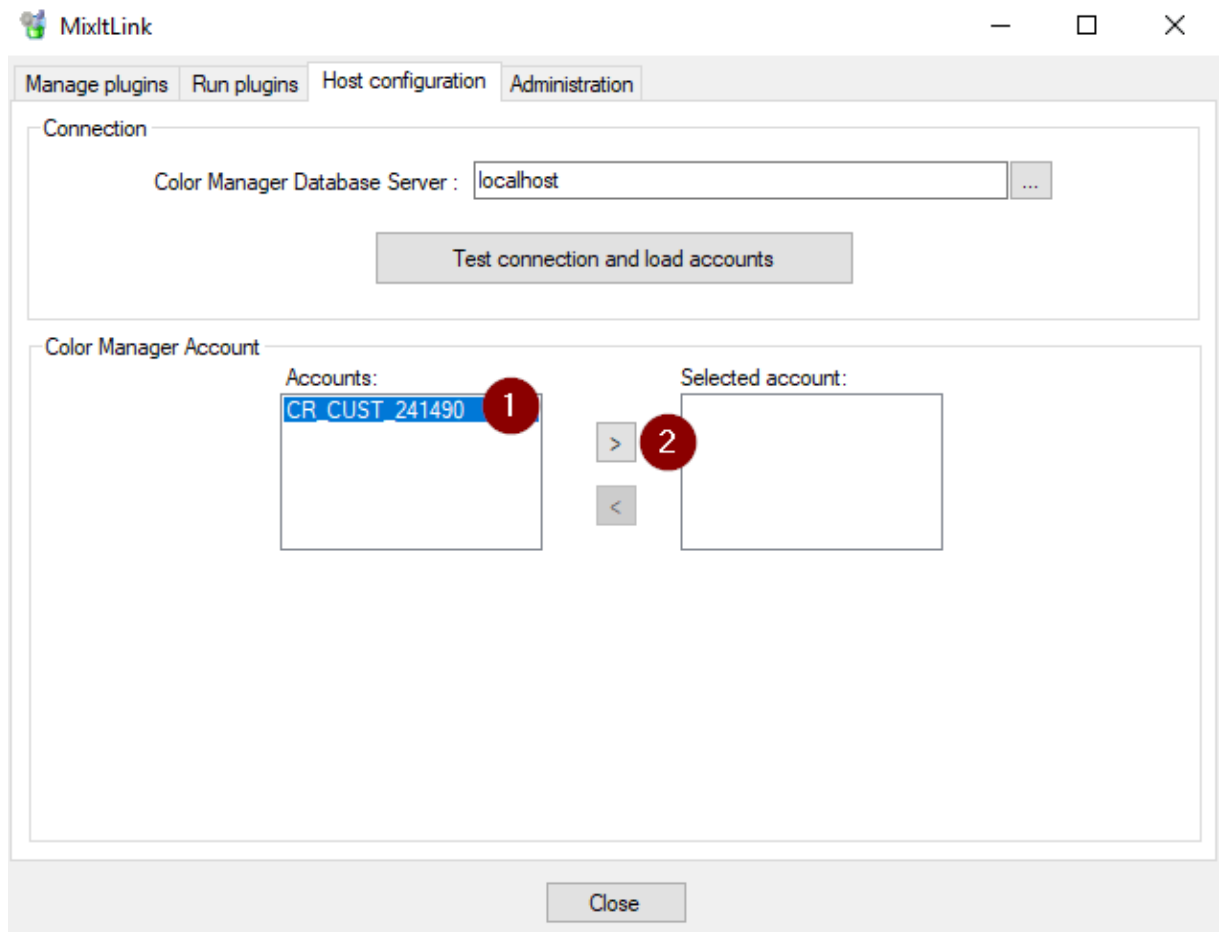


Figure 5. Host configuration – adding Color Manager account

### 3 Manage Plugins

The module „Manage Plugins” (Figure 6.) allows you to add and remove plugins. After installation of MixItLink, there are four plugins, that are added by default: Create WO Plugin, Close WO Plugin, Export MIX->XML and MixItLink WS Plugin.

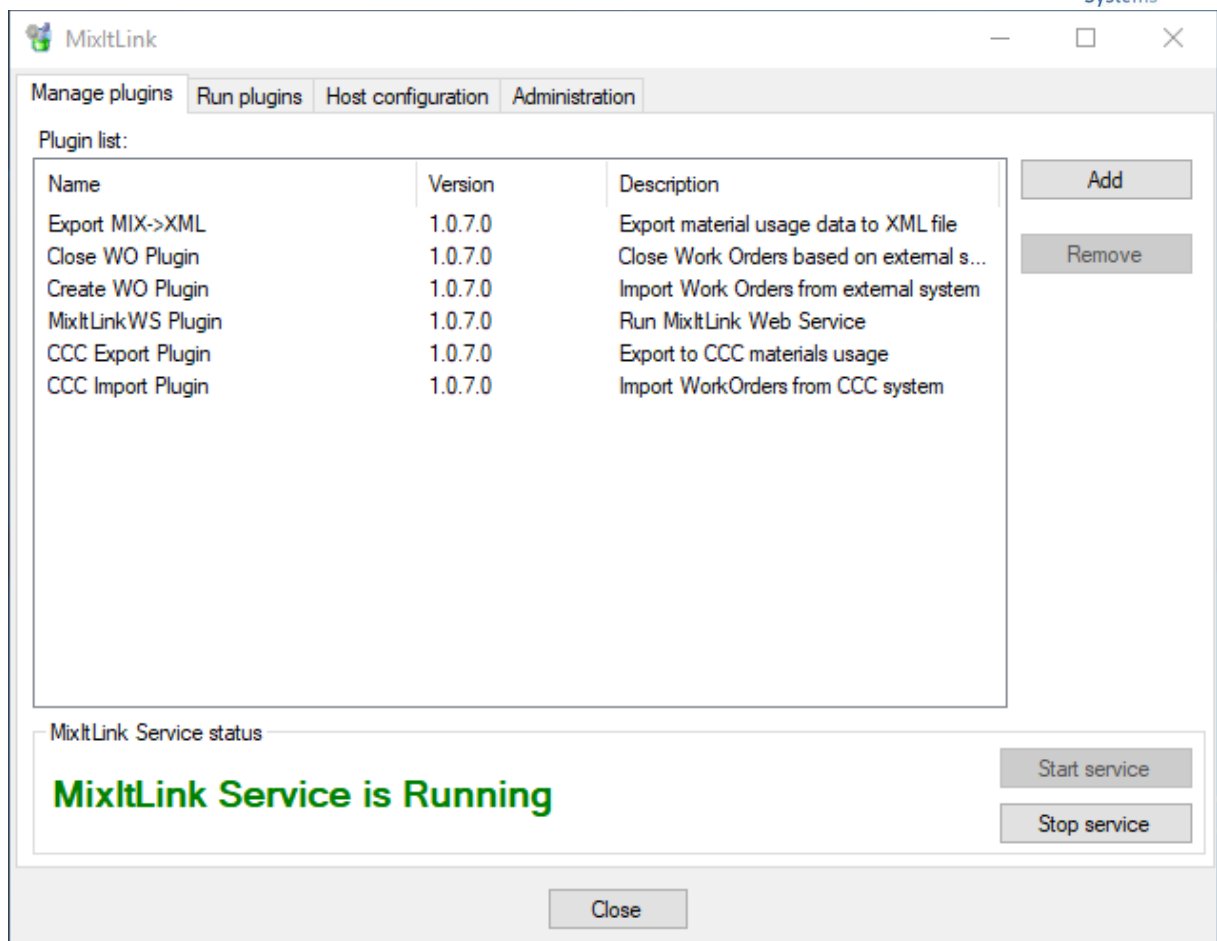


Figure 6. Manage Plugins

Create WO Plugin allows MixtLink to periodically download information about created jobs from different system (DMS or BMS) and to create corresponding Work Orders in Color Manager.

Close WO Plugin allows MixtLink to periodically download information about closed jobs from different system (DMS or BMS) and close corresponding Work Orders in Color Manager.

Export MIX->XML Plugin allows MixtLink to periodically export information about Mixes or Work Orders from Color Manager to one or to many .xml files.

MixtLink WS Plugin allows to run MixtLink Web Service.



In order to add plugin, click the „Add” button at the right. New window (Figure 7.), which will allow you to choose plugin, will be displayed.

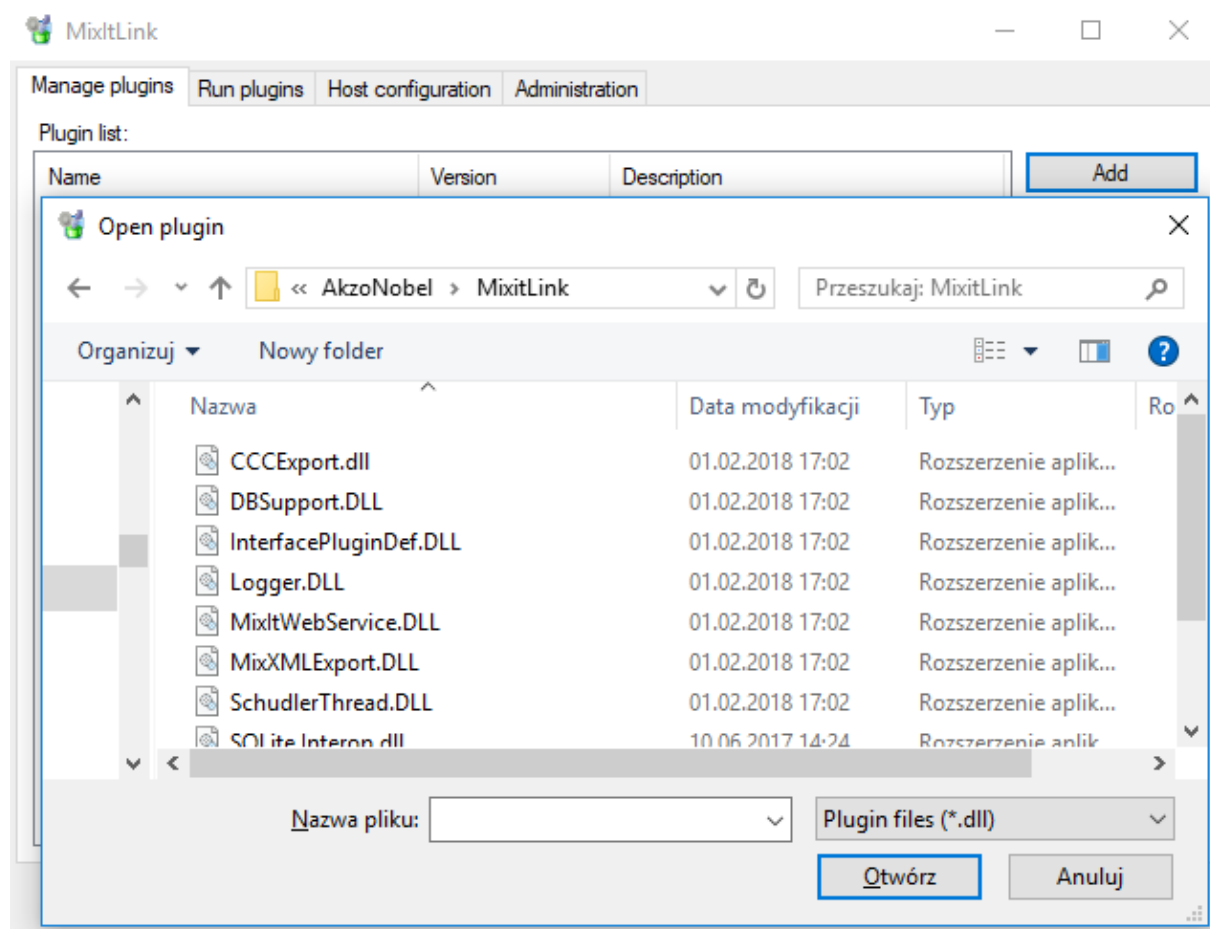


Figure 7. Manage plugins – Add plugin

If the operation is successful, adequate information will be displayed. You will see new plugin added to the list.

To remove plugin, choose the plugin from the list and click the „Remove” button on the right. System will ask for confirmation, and if the operation is successful, adequate information will be displayed. The plugin will be no longer on the list.

## 4 Run plugins

The module „Run plugins” (Figure 8.) allows you to run plugins multiple times, under multiple configurations.

To run plugin, choose the plugin from the left list (*Marker 1.*) and click the top arrow in the middle (*Marker 2.*).

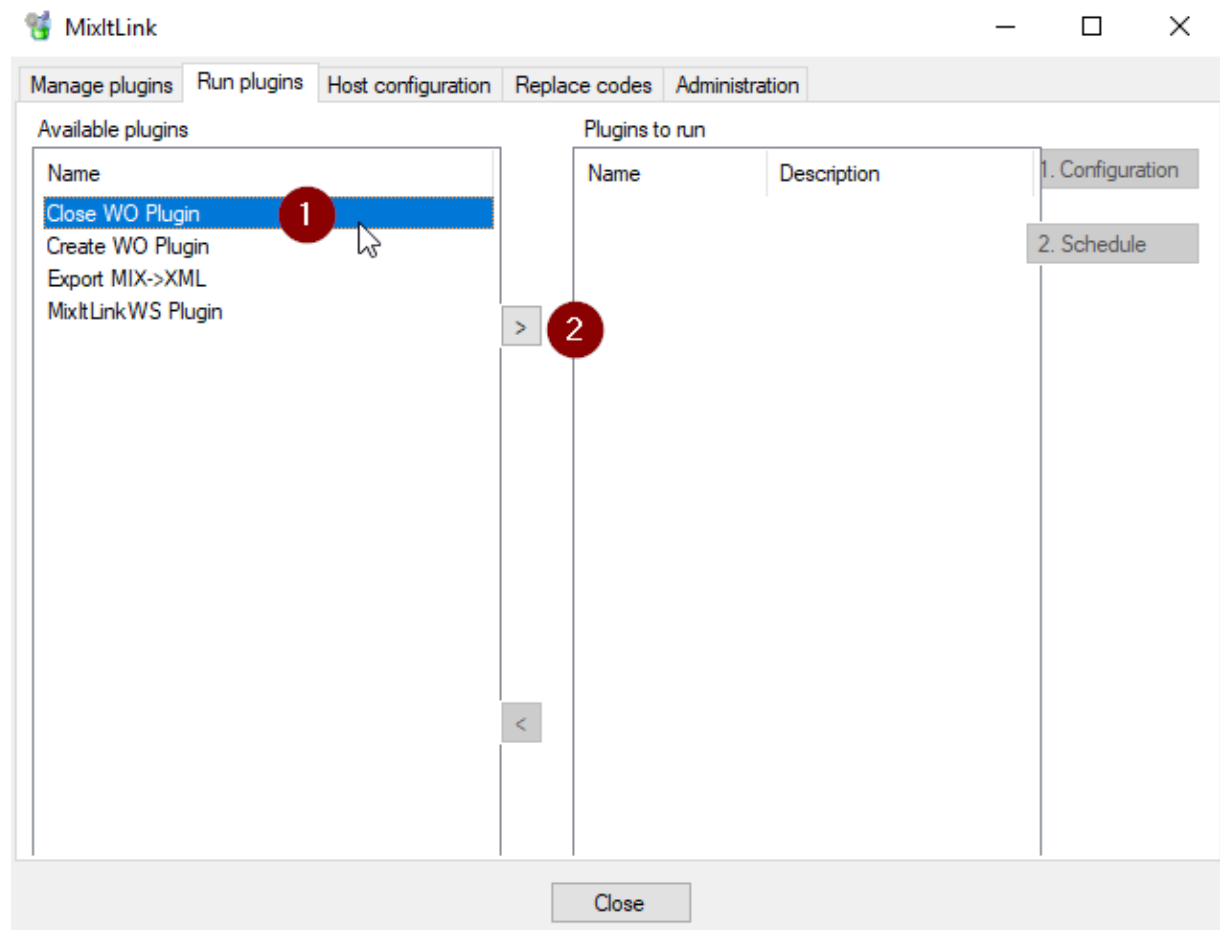


Figure 8. Run plugins

The system will display the window, where you have to type in custom description, and then click „Ok”. If the description hasn’t been typed in, system will not allow to run the plugin.

After running the plugin you can set individual configuration and schedule of every plugin.

#### 4.1 Configuration of Create WO Plugin

After running the Create WO Plugin click the „1.Configuration” button to the right. New window with configuration settings (Figure 9.) will be displayed. You can choose the file or the folder, from which MixItLink will get information about opened jobs. To choose folder you can either enter it manually, or click the button next to the textbox,

to choose it from the files on your device. You should choose the file or folder exported previously from another system, that contains information about opened jobs in corresponding format.

You can also enable response flag, that will force system to create .xml files to every job, informing about success or failure of creating corresponding Work Orders in Color Manager. After switching on Response flag you will have to choose response folder, where all response files will be held.

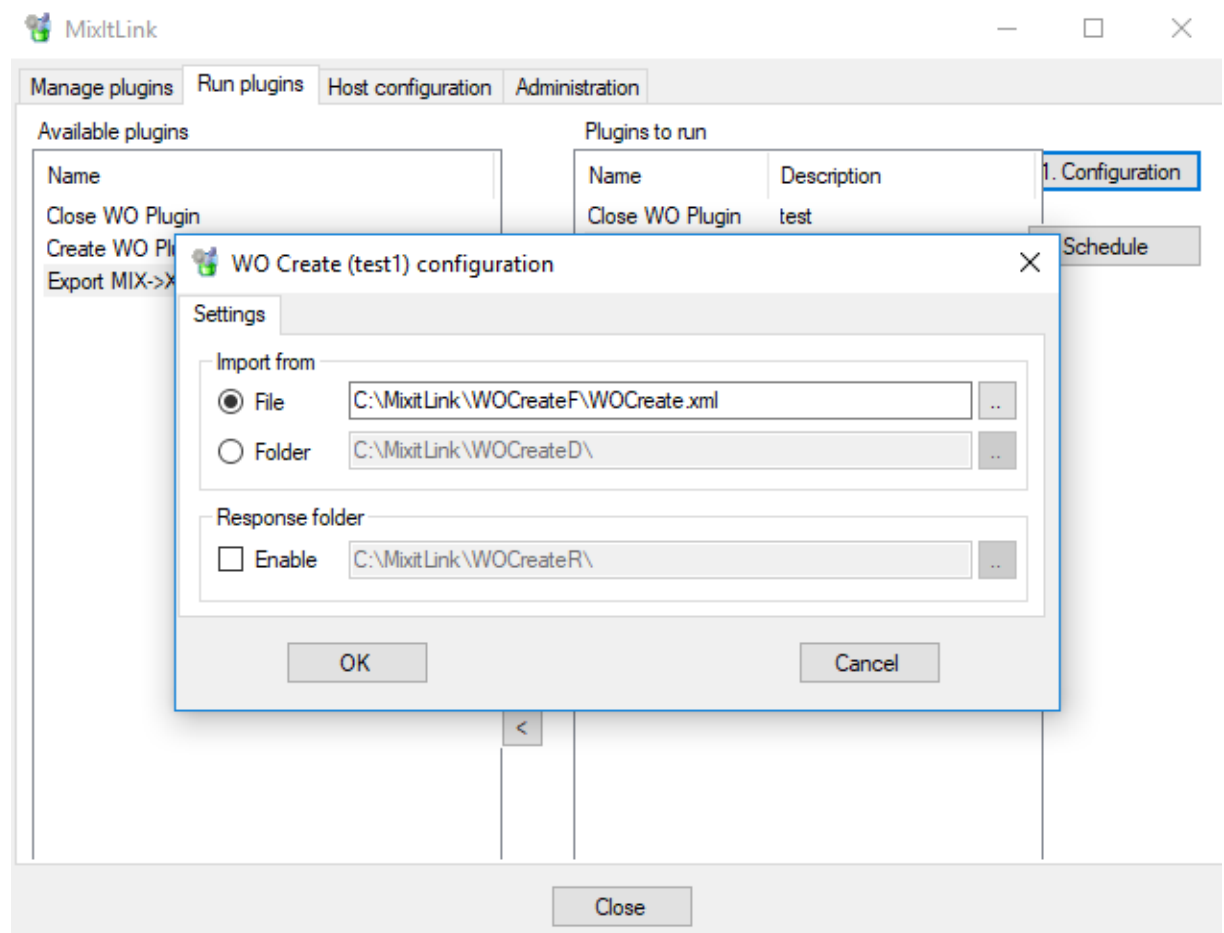


Figure 9. Configuration of Create WO Plugin

## 4.2 Configuration of Close WO Plugin

After running the Close WO Plugin click the „1.Configuration” button on the right. New window with configuration settings (Figure 10.) will be displayed. You can choose the file or the folder, from which MixItLink will get information about closed jobs. To choose folder you can either enter it manually, or click the button next to the textbox, to choose it form the files on your device. You should choose the file or folder exported previously from another system, that contains information about closed jobs in corresponding format.

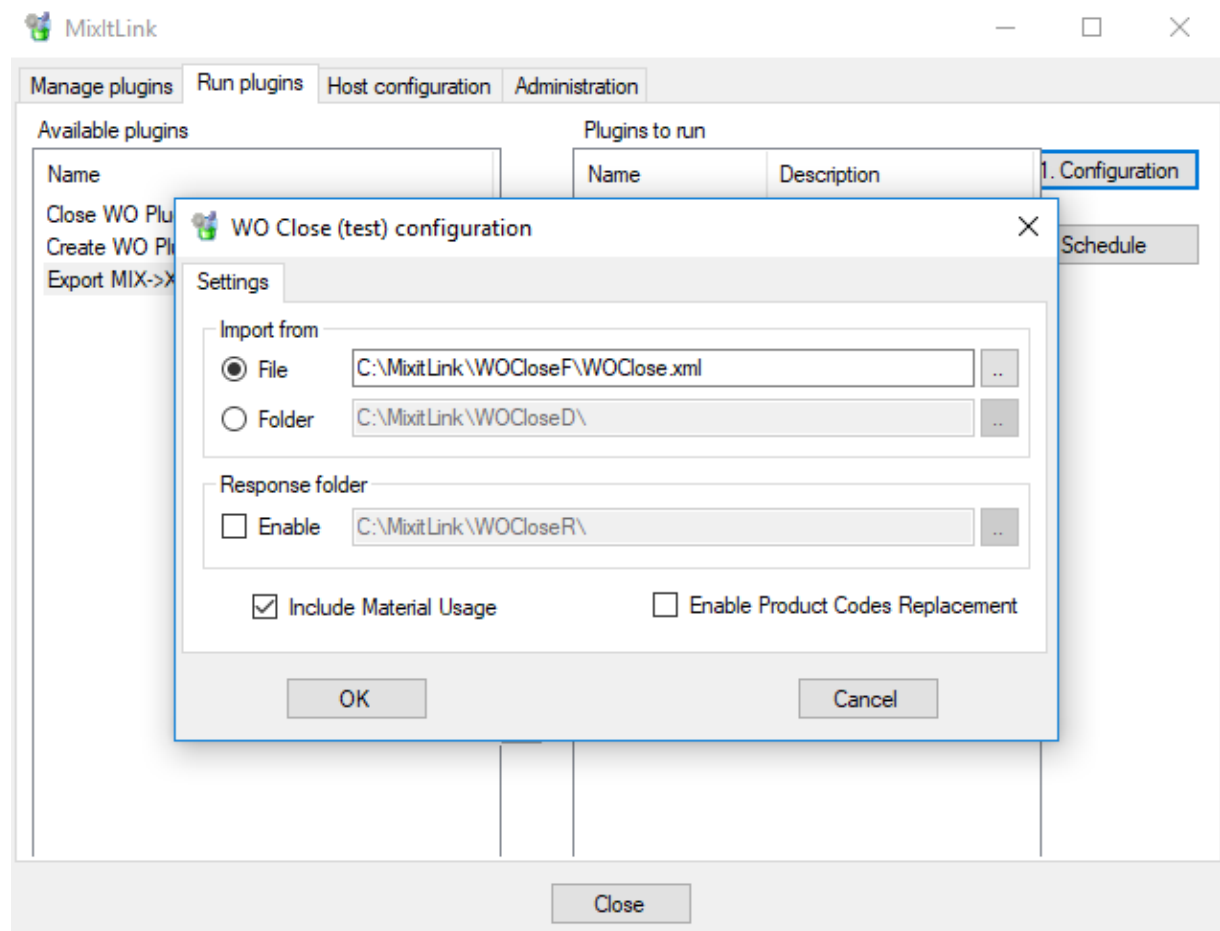


Figure 10. Configuration of Close WO Plugin

You can enable Response Flag (Figure 11., Marker 1.), that will force system to create .xml files to every job, informing about succes or failure of closing corresponding Work Orders in Color Manager. After switching on Response Flag you will have to choose response folder, where all response files will be held.

You can also enable Include Material Usage Flag (*Marker 2.*), that will add information about material usage to every response. If the Response Flag is disabled, switching on the Include Material Usage Flag won't change anything.

Enabling Product Codes Replacement Flag (*Marker 3.*) will force the system to add another tab to Configuration Window. For additional information see *Item 5. Replacement Codes.*

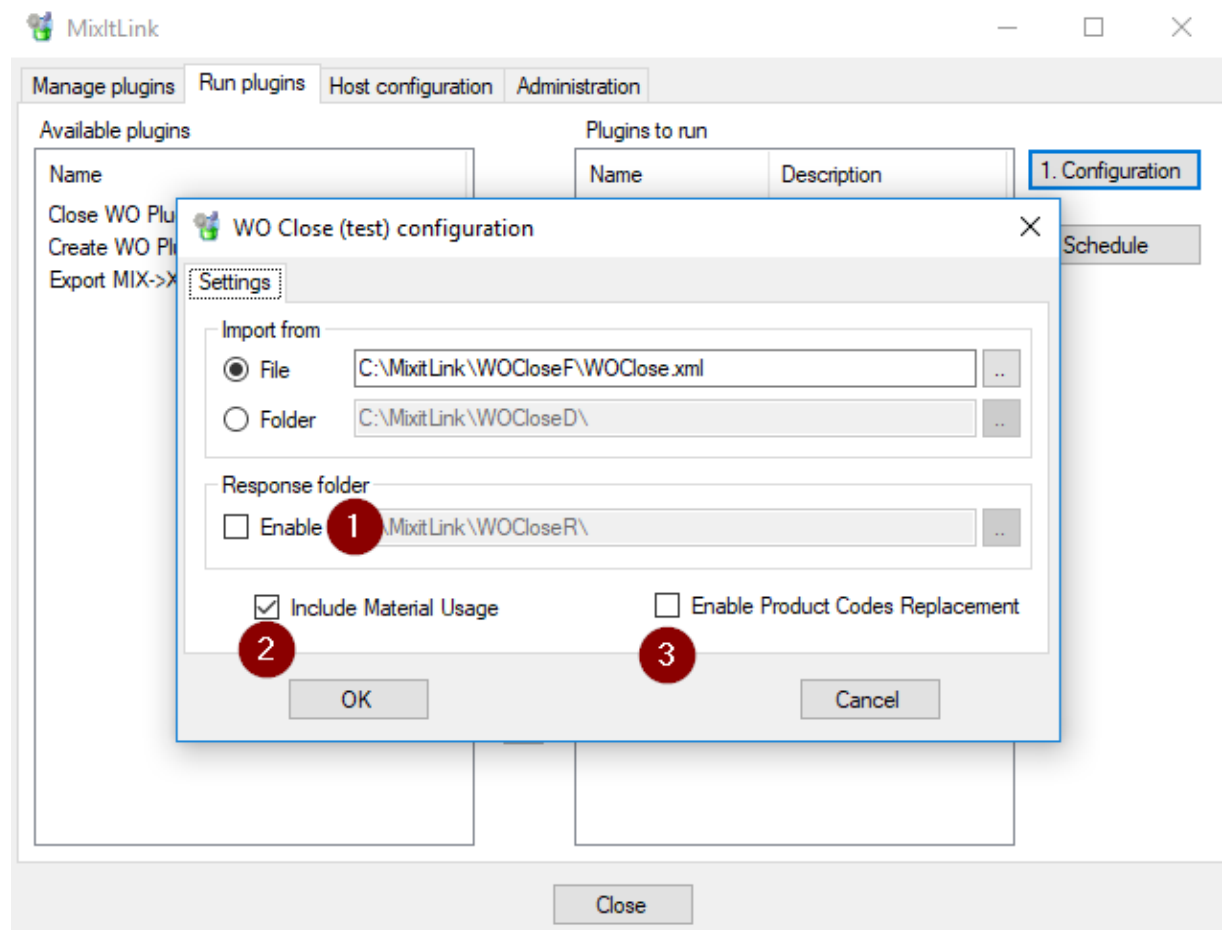


Figure 11. Configuration of Close WO Plugin – Switching on Flags

### 4.3 Configuration of Export MIX->XML Plugin

After running the Export MIX->XML Plugin click the „1.Configuration” button on the right. New window with configuration settings (*Figure 12.*) will be displayed. You can choose the file or the folder, to which MixItLink will export .xml files. To choose folder you can either enter it manually, or click the button next to the textbox, to choose it from the files on your device.

After choosing the folder, you can change file name pattern. Clicking on the question mark on the right side of the textbox will open new window, displaying the standardized schema of file names. If the file name will be entered incorrectly, system will not allow to configurate the Plugin.

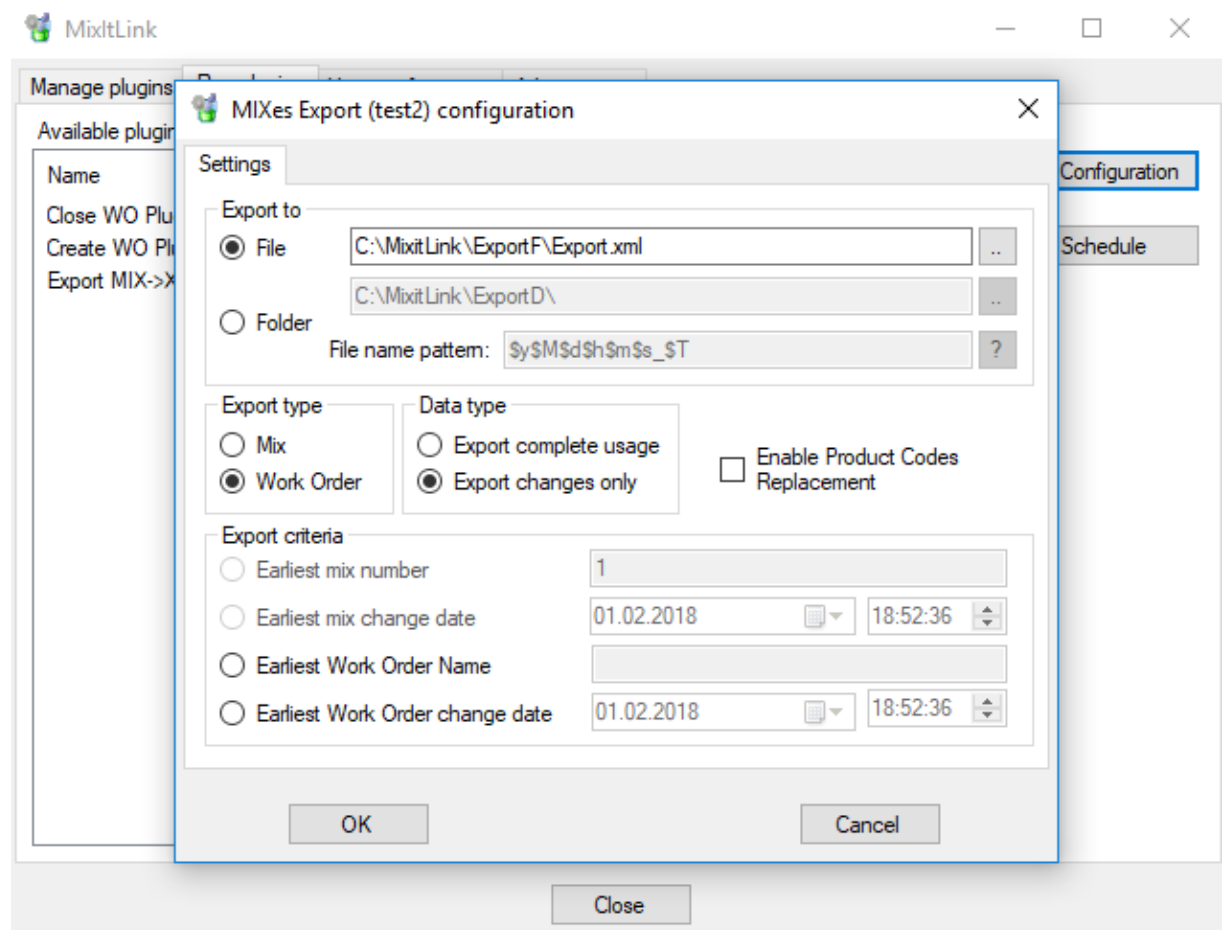


Figure 12. Configuration of Export MIX->XML Plugin

To set export type, you have to choose from two values: „Mix” and „Work Order” (Figure 13., Marker 1.). When „Mix” type is chosen, system will only export Mixes from Color Manager. Respectively to the „Work Order” type.

To set the type of data exported, you have to choose from two values: „Export complete usage” and „Export changes only” (Marker 2.). „Export complete usage” means, that with every cycle the system will export complete information about Mix or Work Order. „Export changes only” means, that system will export only changes, that have been entered since last export.

Export criteria differ, depending on the export type. If you have chosen „Mix” export type, you can choose as export criteria either „Earliest mix number” or „Earliest mix change date” (Marker 3.). If you have chosen „Work Order” export type, you can chose either „Earliest Work Order name” or „Earliest Work Order change date” (Marker 4.).

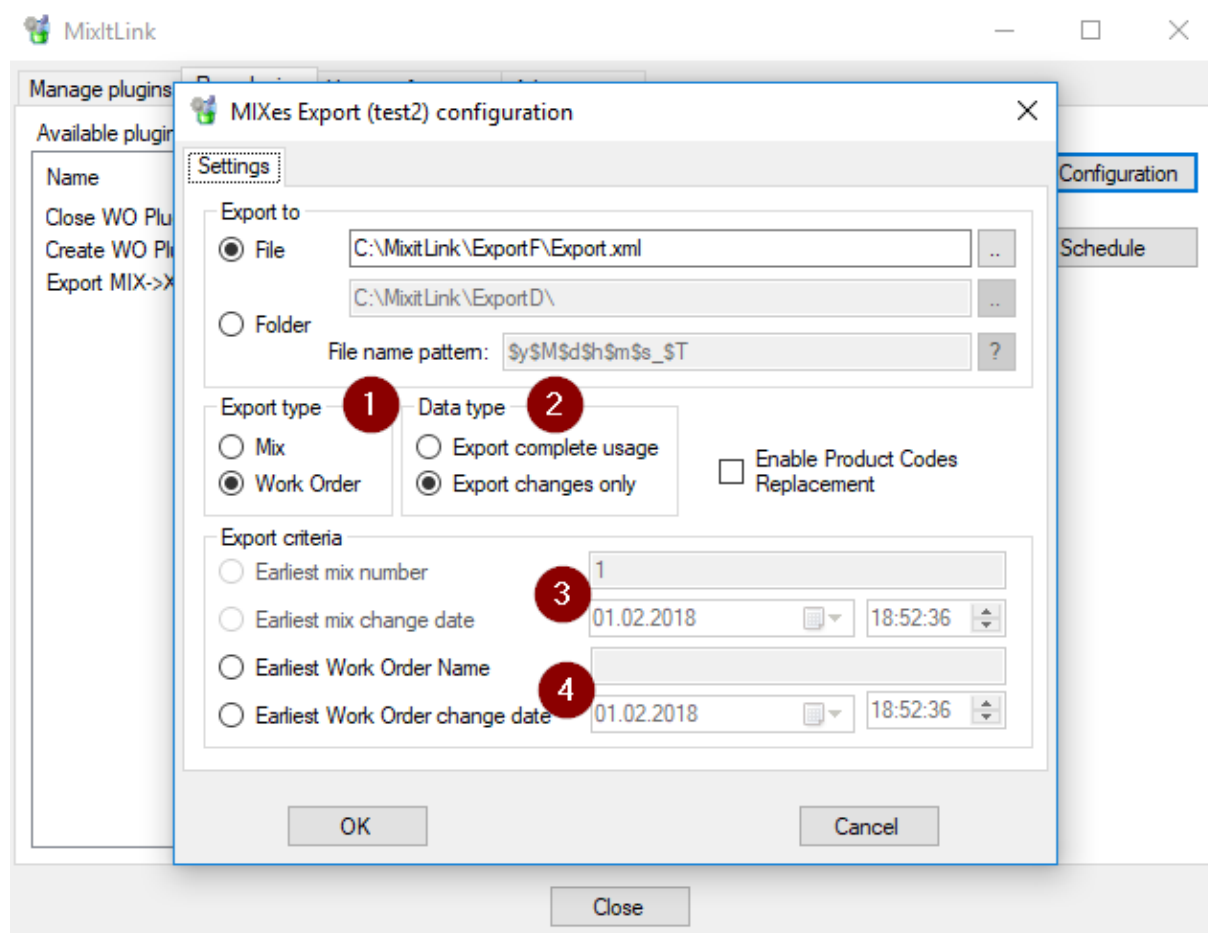


Figure 13. Configuration of Export MIX->XML Plugin – Export Settings

Enabling Product Codes Replacement Flag will force the system to add another tab to Configuration Menu. For additional information see *Item 5. Replacement Codes*.

#### 4.4 Configuration of MixItLink WS Plugin

After running the Export MIX->XML Plugin click the „1.Configuration” button on the right. New window with configuration settings (*Figure 14.*) will be displayed. For the Web Service to work, you have to input host address, as well as username and password, given to you by the administrator of the MixItLink System. You also have to set the number of the port, also delivered by the administrator. It is required, to double-check these fields, because if filled wrong, they will prevent Web Service from running.

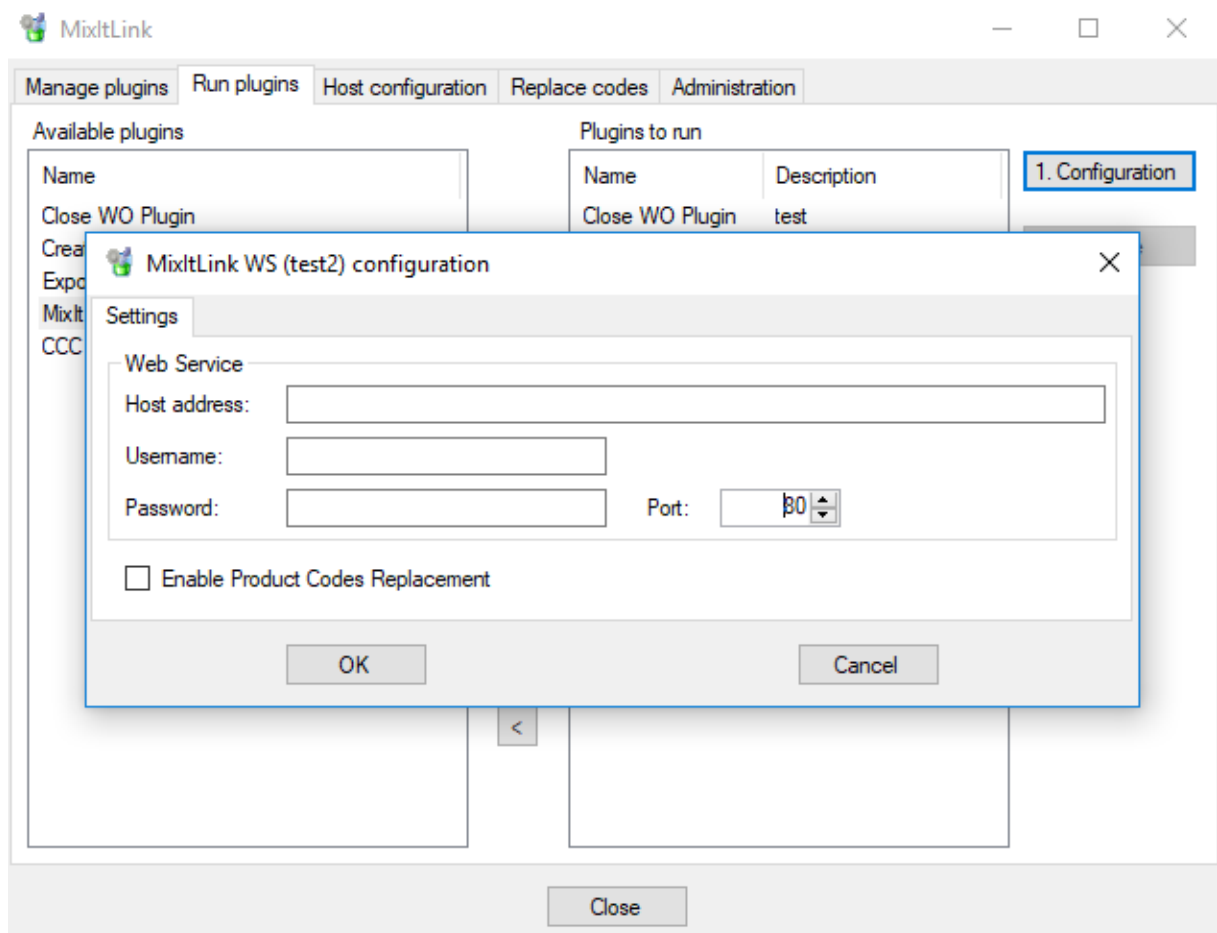


Figure 14. Configuration of MixItLink WS Plugin

Enabling Product Codes Replacement Flag will force the system to add another tab to Configuration Menu. For additional information see *Item 5. Replacement Codes*.



## 4.5 Scheduling Plugins

Three default MixItLink Plugins share the same Schedule configuration. After adding one of the three plugins click „2.Schedule” button on the right. New window with schedule settings (*Figure 15.*) will be displayed.

**Important notice: You cannot schedule MixItLink WS Plugin!**

You can set different schedules for different plugins. Schedule needs to be chosen from four types: „Run continuously”, „Run multiple times per day”, „Run once per day” and „Run once per week”.

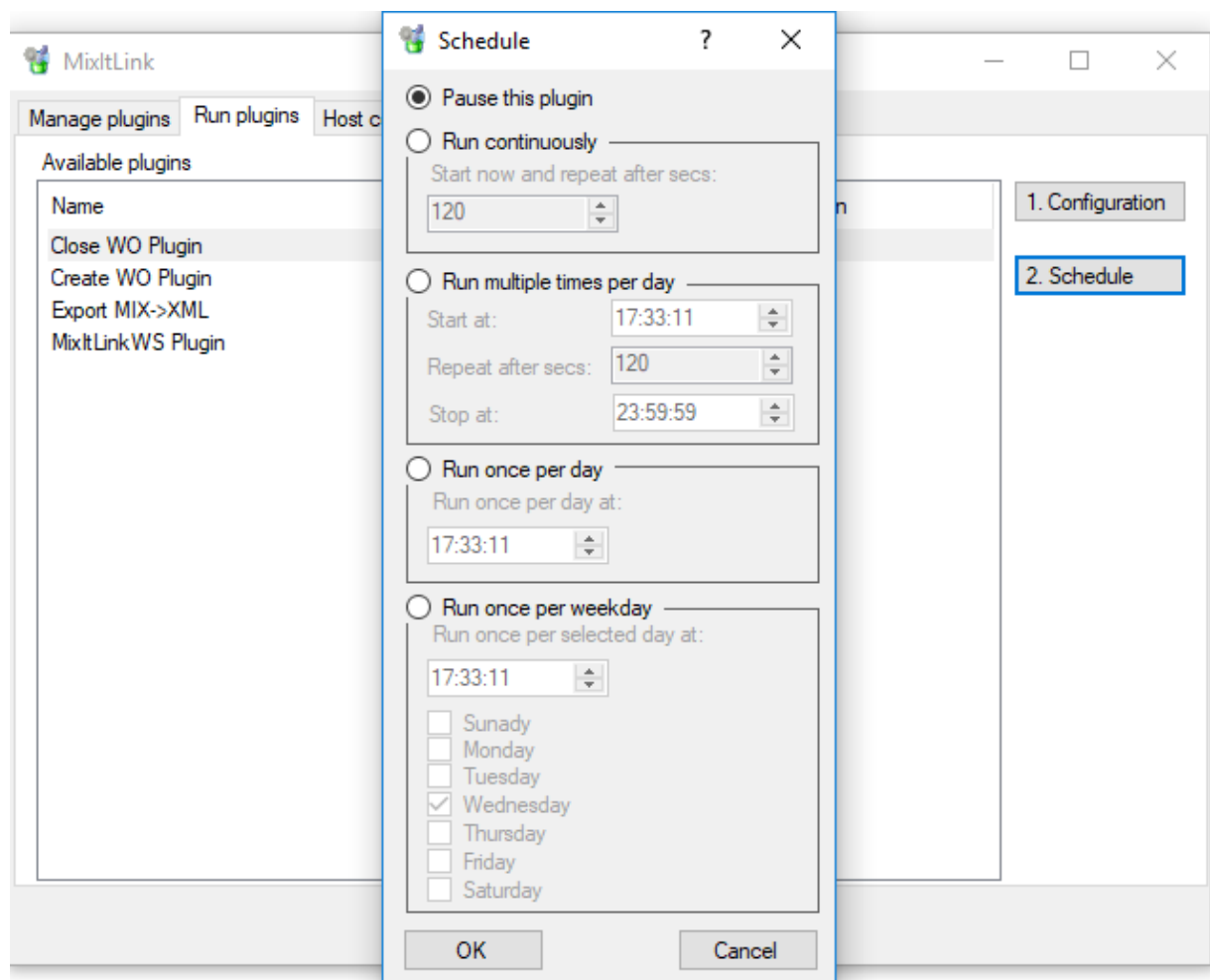


Figure 15. Scheduling all three Plugins

The default setting for the scheduler is „Pause this plugin”. After scheduling plugin, you can always pause it using this setting.

„Run continuously” allows to run plugin in the intervals, that can have duration between 1 second and 24 hours (86 400 secs). You have to enter an integer.

„Run multiple times per day” allows to run plugin in multiple intervals, at the specific time of the day. You can choose the beginning of the run and the ending of the run (in the 24h format), as well as the interval.

„Run once per day” allows you to choose exact time of the day, at which plugin will be run just once . You have to input an hour in 24h format.

„Run once per week” allows you to choose exact time and day of the week, on which plugin will be run just once. You have to input an hour in 24h format and select the day from the list.

## 5 Replacement Codes

If you will enable Enable Replacement Codes Flag at any plugin run, a new tab „Replacement Codes” will appear (*Figure 16.*). It can be used to change original codes of products taken by system from Color Manager into custom made codes.

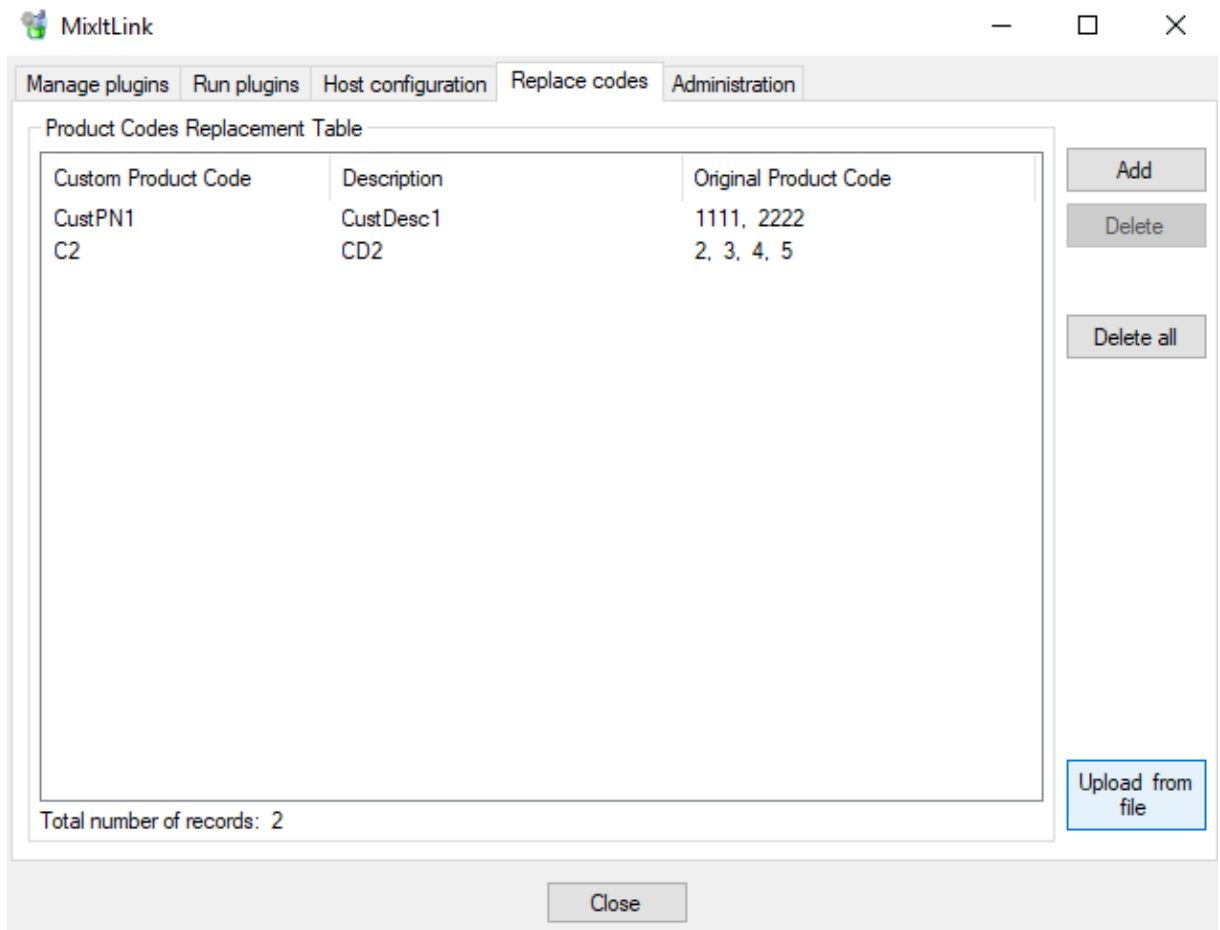


Figure 16. Replacement Codes

You can change codes manually, by clicking „Add” button to the right and inserting Original Product Code, Custom Product Code and, optionally, description (Figure 17.). You can also change codes, by clicking „Upload from file” button and uploading adequate file in the XXX format.

To delete replacement code you have to choose it from the list and click the „Delete” button. To delete all the replacement codes, you have to click „Delete all” button.

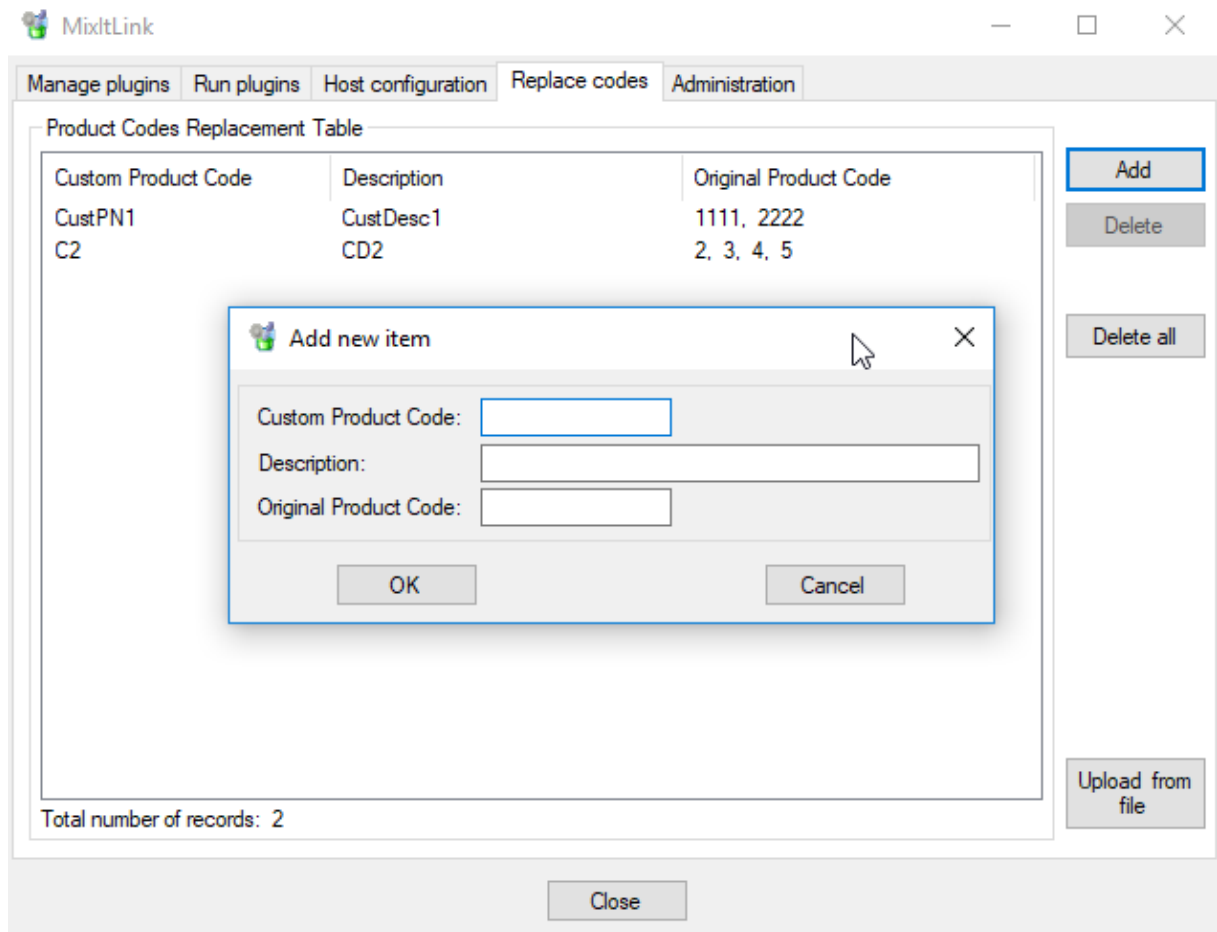


Figure 17. Replacement Codes – Add new item

## 6 Administration

If you have run *MixtLink Config ADMIN*, you will be able to see additional tab – „Administration”. This tab is available only in the ADMIN mode.

„Administration” module (Figure 18.) allows you to clear plugin history. You have to choose, whether you want to clear history of MIXes or history of Work Orders. To select the MIXes or Work Orders, you have to input numbers, according to displayed criteria.

You can also select the plugin, for which history will be cleared. You can do it by choosing a plugin in the right window, and clicking “Clear for selected plugins”. It will cause system to clear history of selected MIXes or Work Orders.

To clear whole history of selected plugins you have to click “Clear ALL for selected plugins”.

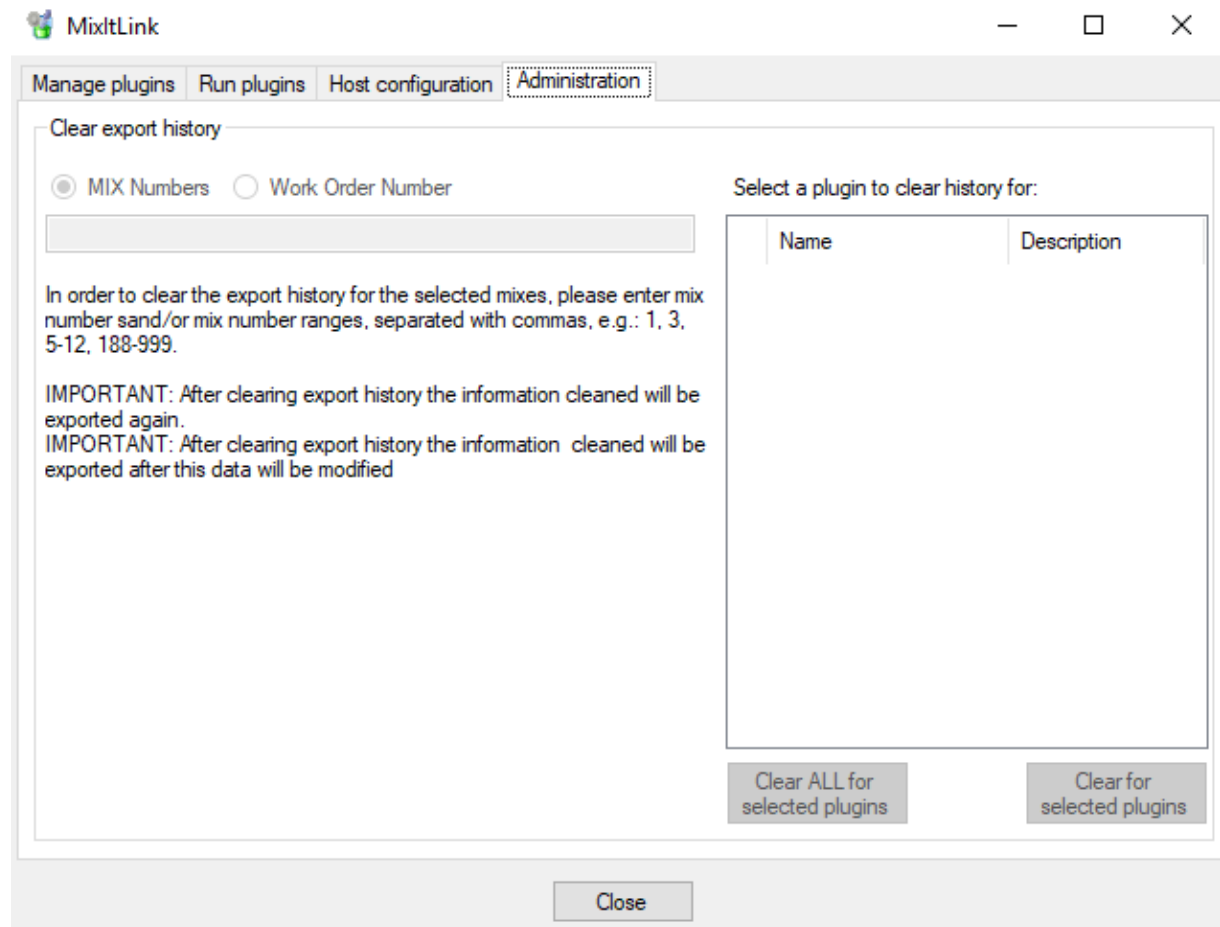


Figure 18. Administration