



Wings Systems Spółka z o. o.

04-697 Warsaw, Poland. Mrówcza 243 Street
KRS 0000594464, NIP 1132900586

phone: +48 501 782 569
kontakt@wingsystems.pl

MixItLink 1.0.7.0 Installation Manual



Table of contents

1	Introduction	4
2	Installation of SQLite.....	4
3	MixItLink Installation	7



Document history

<i>Author</i>	<i>Date</i>	<i>Revision</i>	<i>MixItLink version</i>
Magdalena Bednarska	2018-03-21	1.0	1.0.6.4
Magdalena Bednarska	2018-03-27	1.1	1.0.7.0

1 Introduction

To install MixItLink 1.0.7.0 package, you need to download it first, using the provided link. To download package you will need internet connection. The package will come zipped, it is needed to unzip it before installation.

Attention: Before installing the new version of MixItLink Service, make sure that older version has been removed from your computer!

MixItLink Setup Wizard will guide you through the whole installation. The installer will install two components: first SQLite, then MixItLink.

2 Installation of SQLite

After clicking downloaded file, installation window (*Figure 1.*) will be displayed.

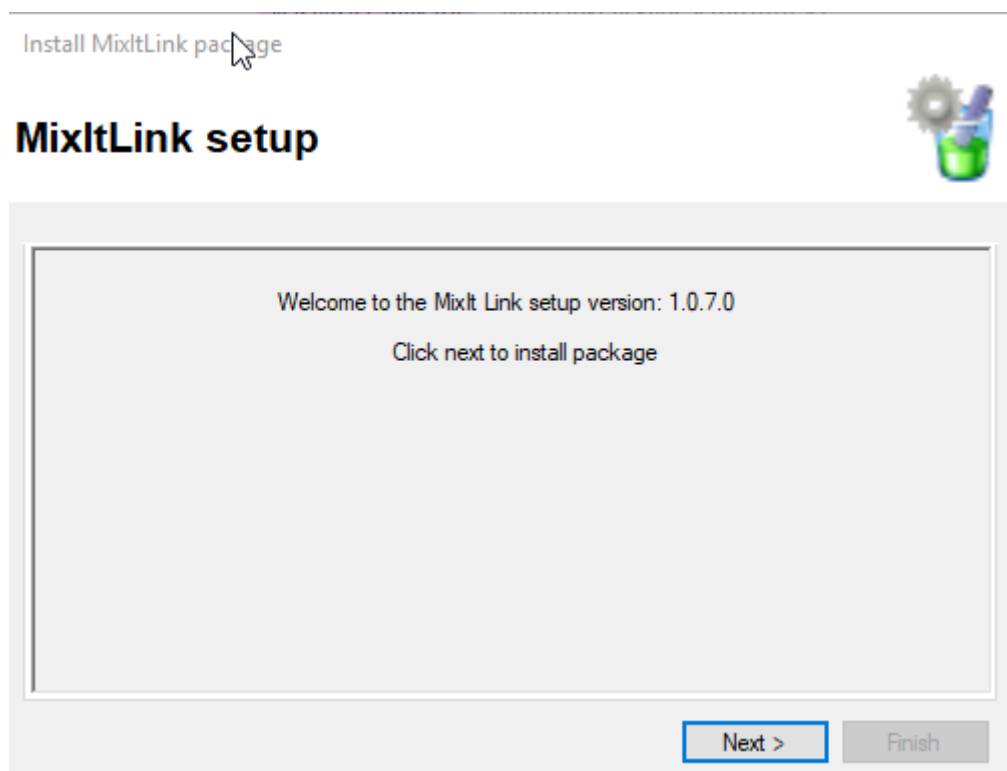


Figure 1. MixItLink Setup Wizard – opening window

To install package, you need to click “Next” button at the bottom of the page. Next window will be displayed (*Figure 2.*).

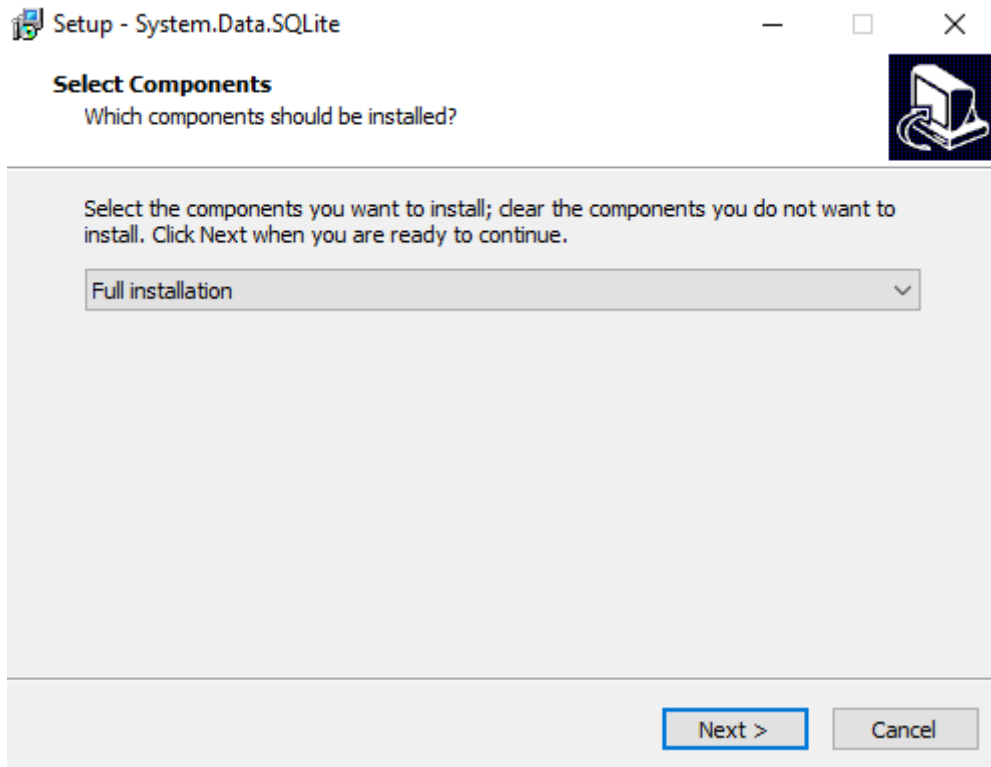


Figure 2. Select Components window

You have to choose “Full installation” from the list, and then click “Next” button. *Select additional task* window will appear (Figure 3.).

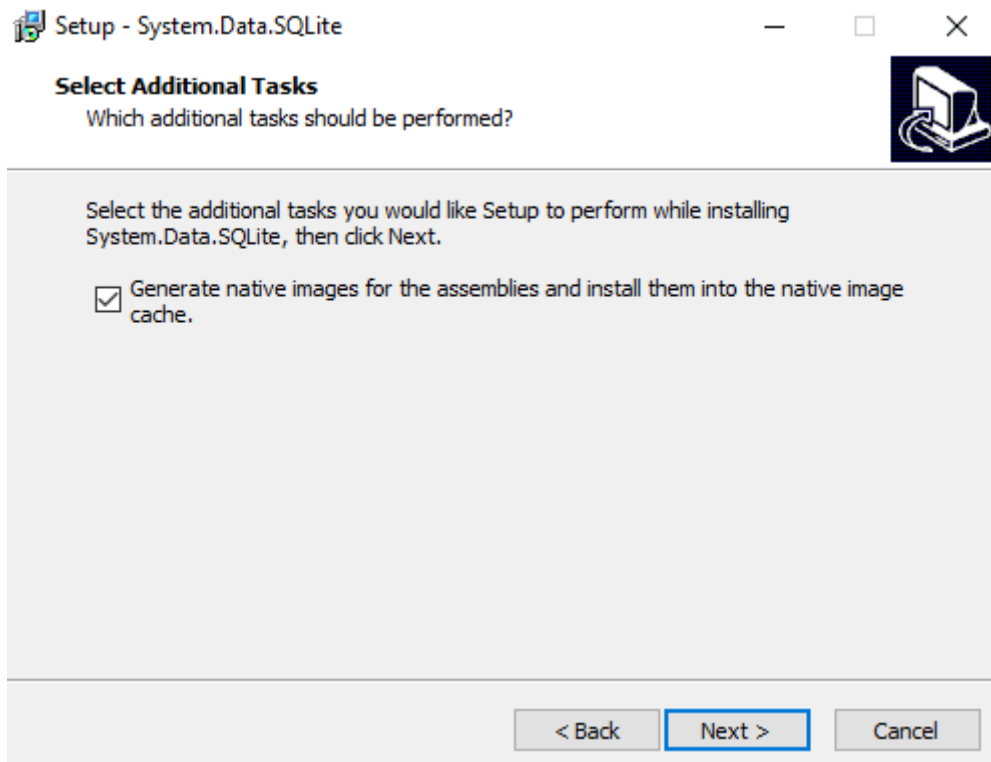


Figure 3. Select Additional Tasks window

You have to tick the box, selecting the task, and then click the “Next” button. The system will show you confirmation window (*Figure 4.*), with all the selected tasks and components displayed.

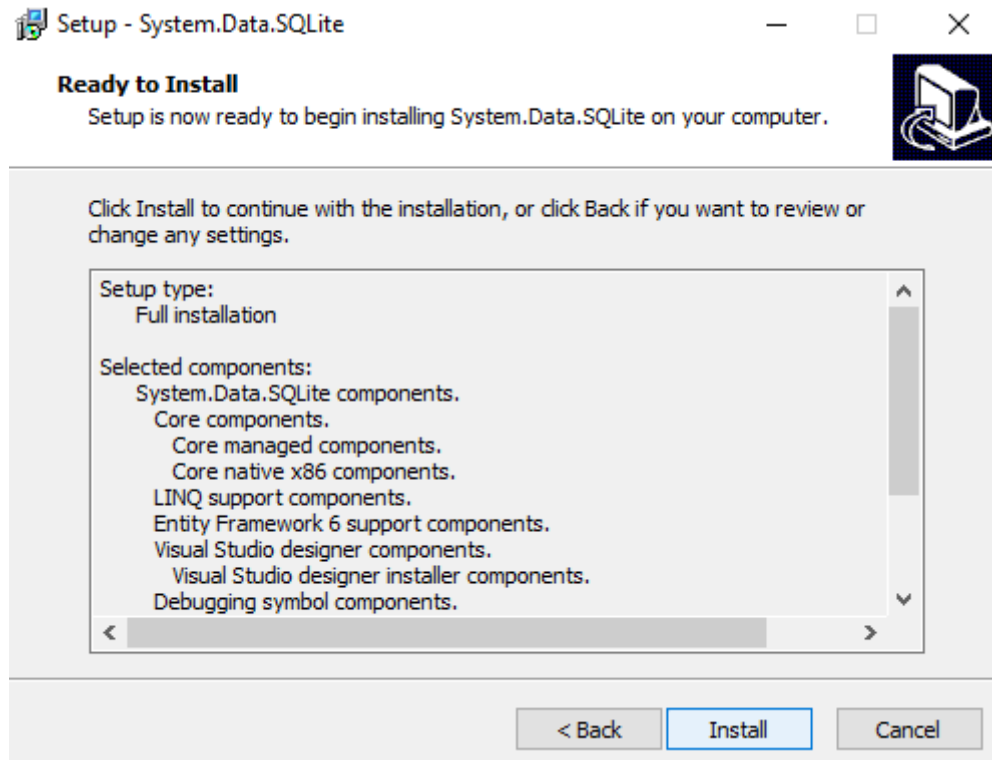


Figure 4. Confirmation window

After clicking “Install” button, the installation will take place. At the end of the first installation, closing window will be shown (*Figure 5.*). Optionally, you can view *ReadMe* file after finishing.

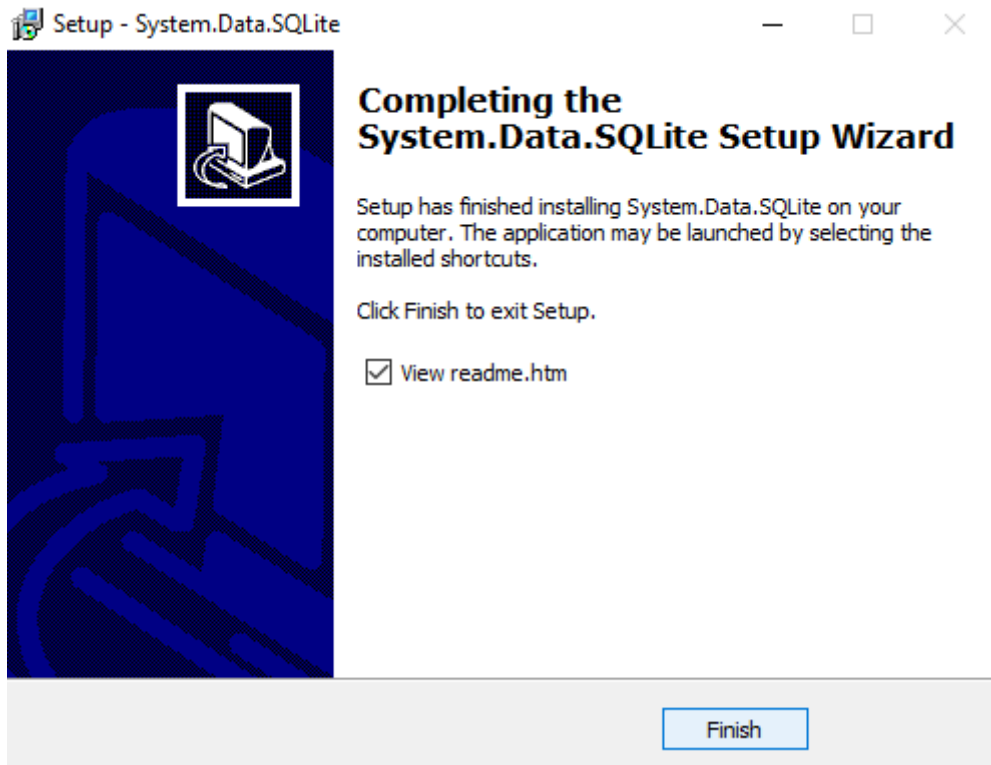


Figure 5. Closing window

3 MixItLink Installation

Right after clicking „Finish” by the SQLite Installation, the system will display window, confirming the success of installation (*Figure 6.*)

Install MixItLink package

Install SQLite support

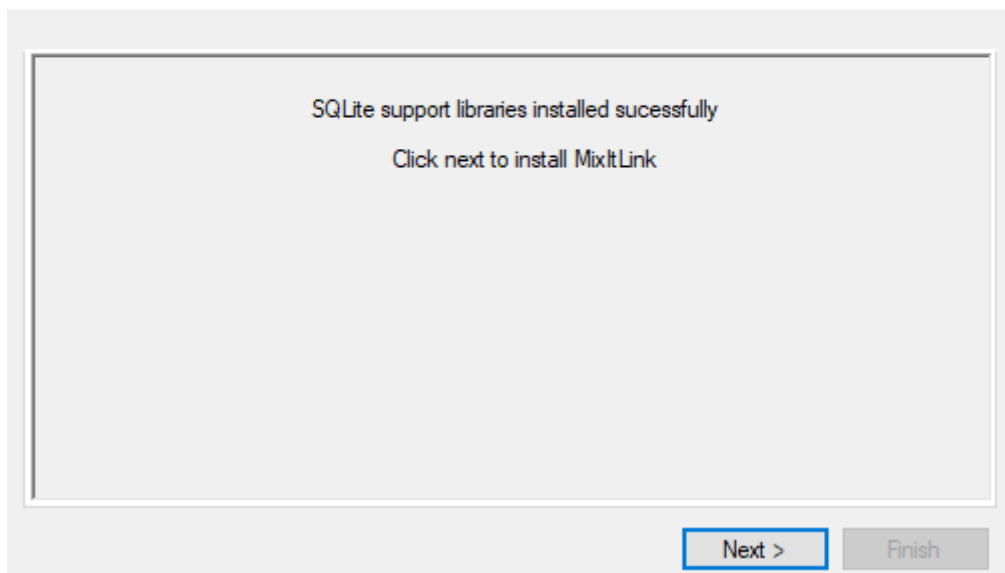


Figure 6. Successful installation

You have to click “Next” button, which will move you straight to the installation of MixItLink. First you will see the opening window (Figure 7.), and then, after clicking “Next”, *Select Installation Folder* window, which will allow you to choose installation folder and set the access (Figure 8.). Although, we recommend not to change the folder of installation.

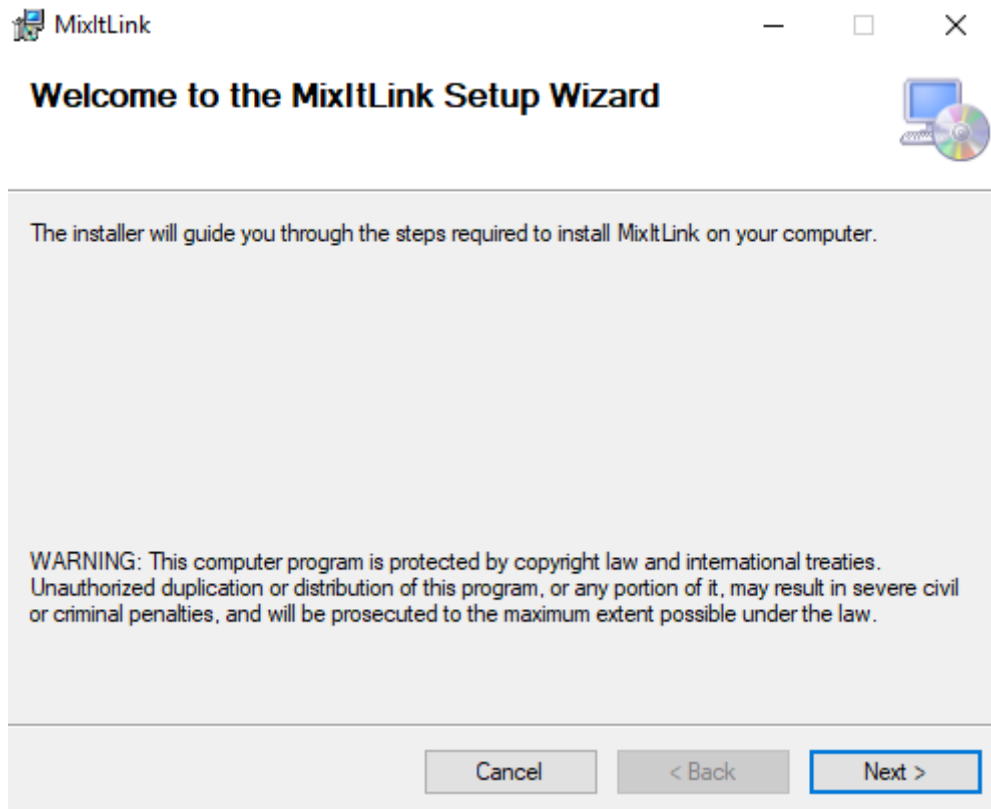


Figure 7. Opening window

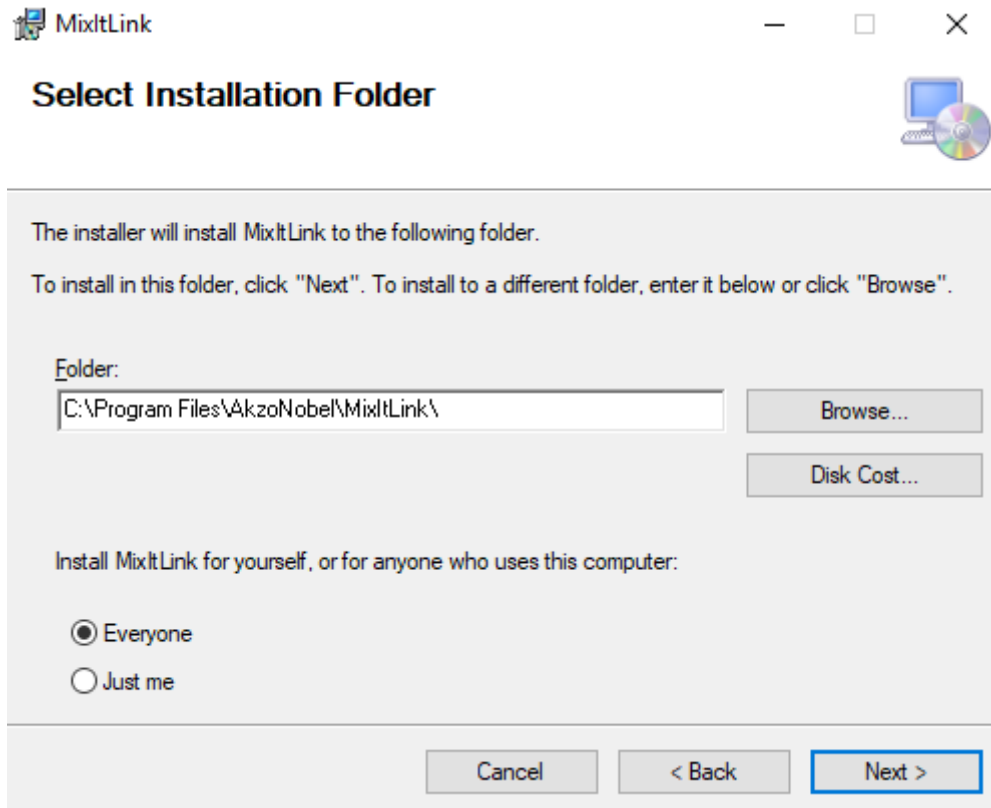


Figure 8. Select Installation Folder window

Additionally, you can choose the range of the access to the MixItLink product – when you choose „Everyone” option, then every user on your computer will be able to run MixItLink, however when you choose „Just me” option – only one user will be able to use MixItLink.

Then, the confirmation window will be displayed (Figure 9.).

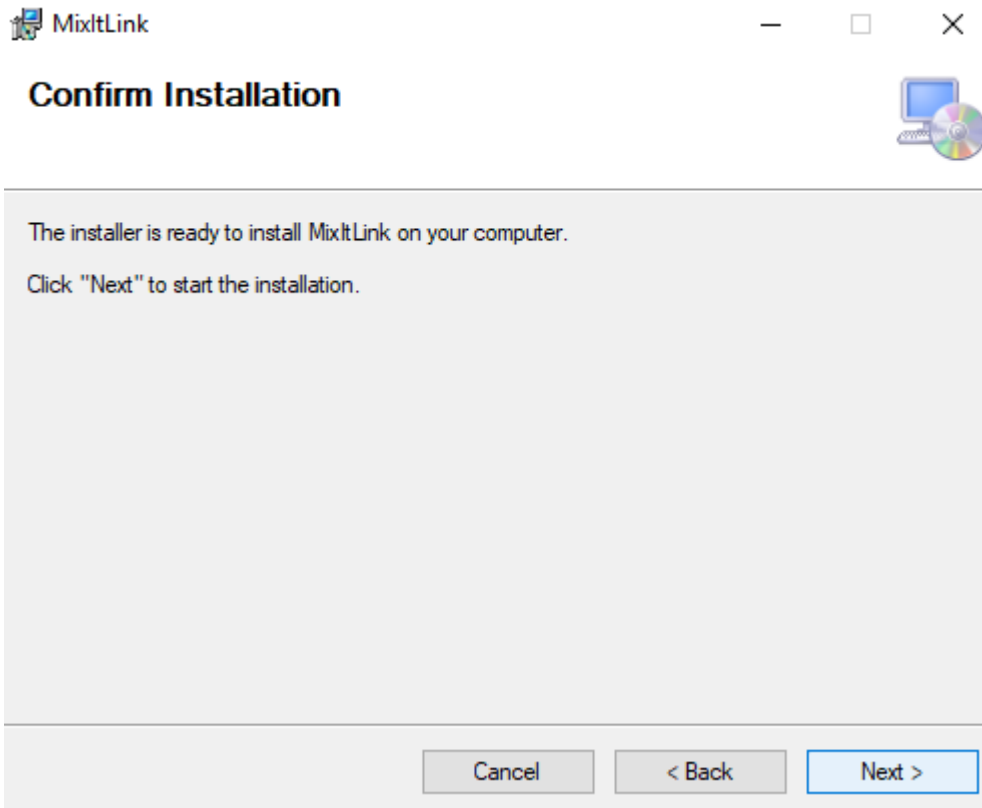
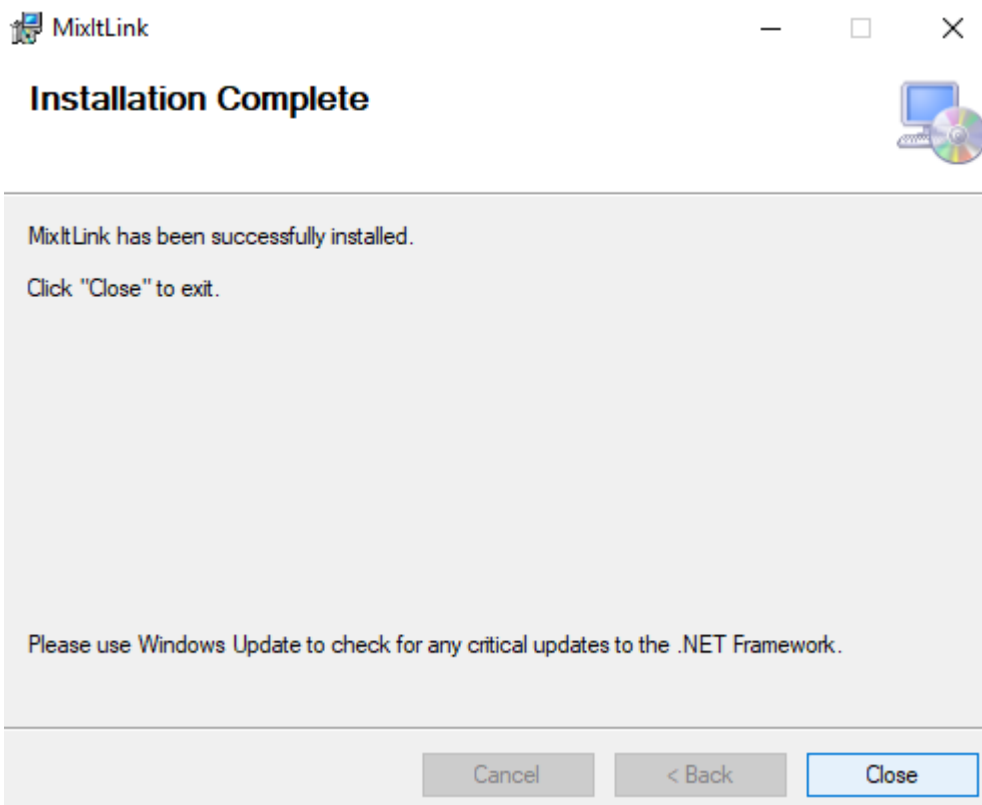


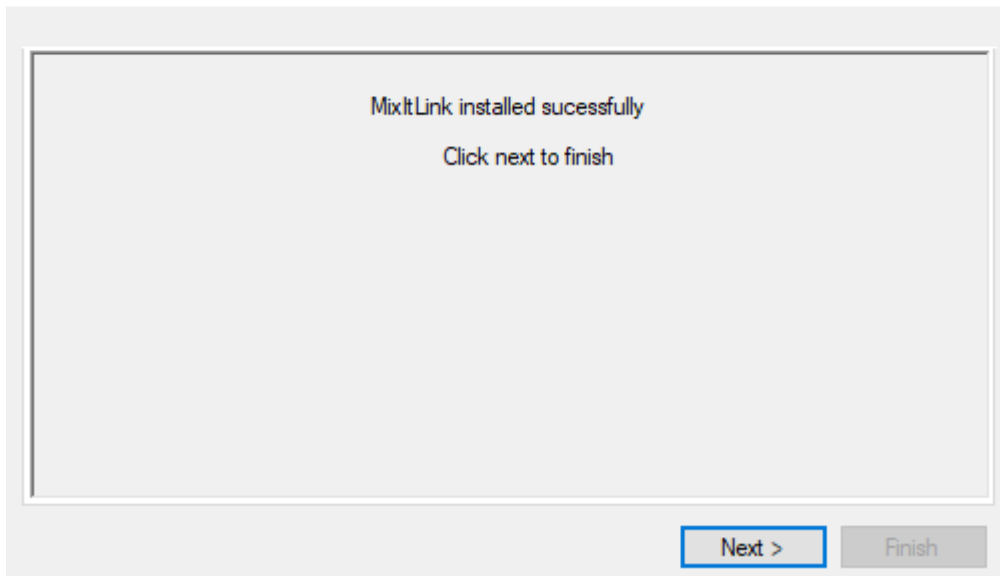
Figure 9. Confirmation window

After clicking “Next”, the installation will take place. Success of the installation will be marked in the next window (Figure 10.). After that, installation of MixItLink will be completed.



Install MixItLink package

Install MixItLink



Install MixItLink package

Installation completed

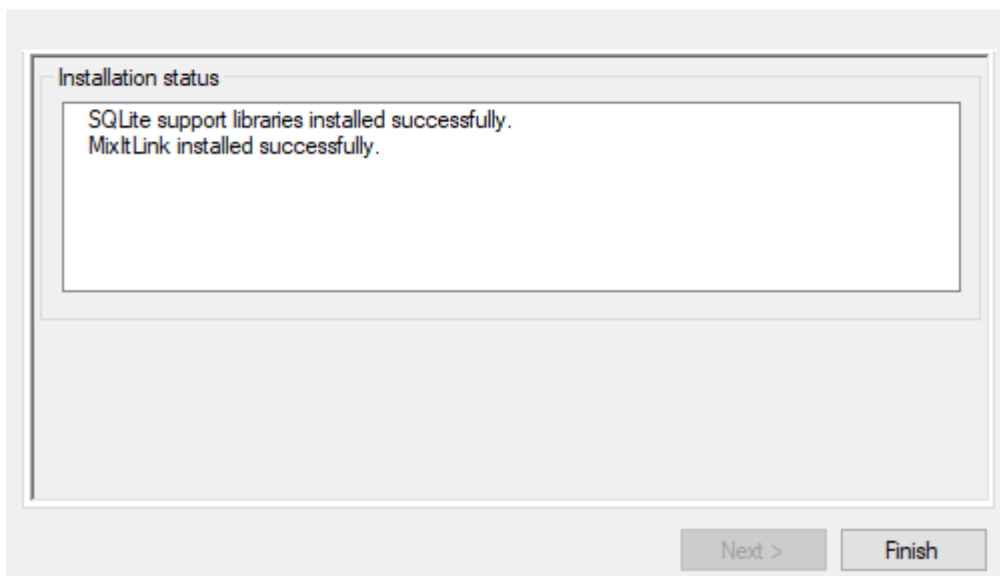


Figure 10. Closing window