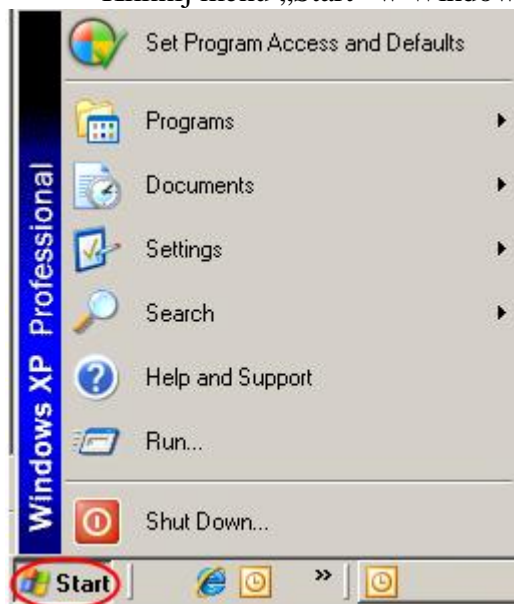
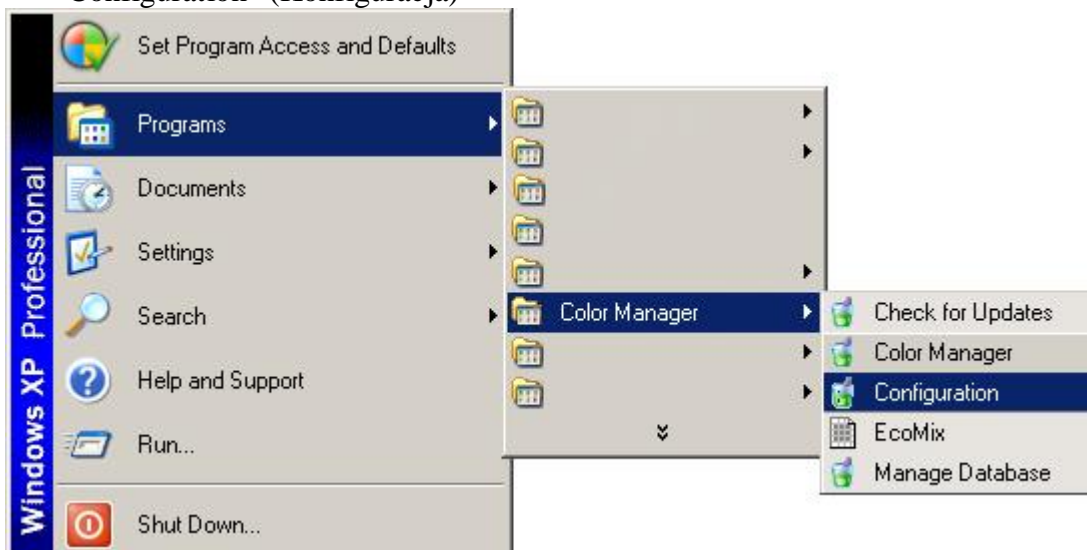


Aby uzyskać dostęp do swojego konta, wykonaj poniższe kroki:

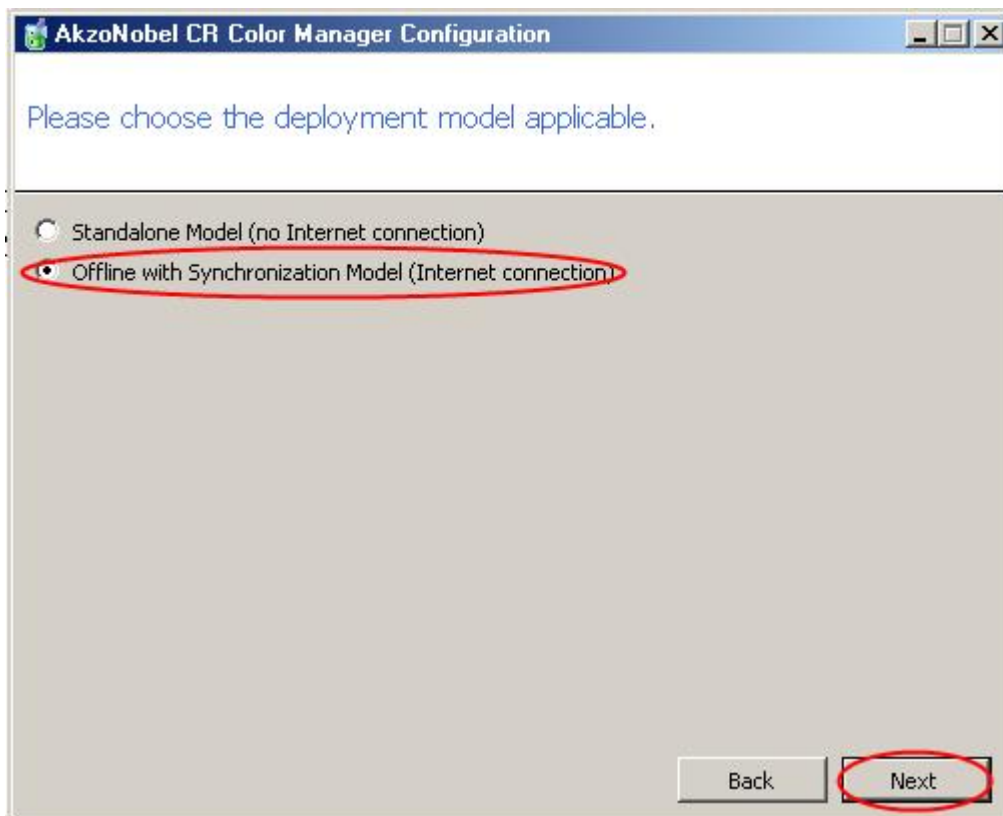
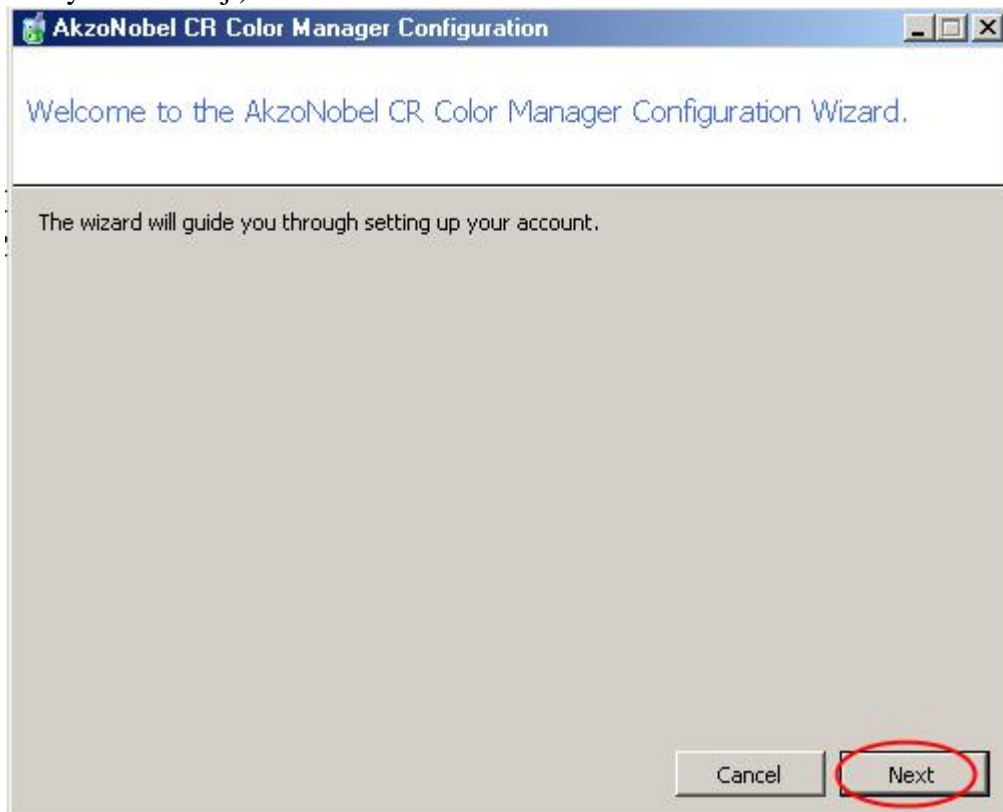
- Kliknij menu „Start” w Windows



- Kliknij „Programy” a następnie “Color Manager” (Menadżer koloru) oraz “Configuration” (Konfiguracja)



- Kontynuuj w "Configuration Menu" (Menu konfiguracji), wybierając "Next" (Dalej) oraz "Offline with Synchronization Model" (Offline dla modelu synchronizacji)



- Nie dokonuj zmian w ustawieniach Proxy i kliknij „Next” (Dalej)

The screenshot shows a window titled "AkzoNobel CR Color Manager Configuration". The main heading is "Configure proxy server settings." Below this, there are two radio button options: "No Proxy Server" (which is selected) and "Use Proxy Server". At the bottom right, there are two buttons: "Back" and "Next". The "Next" button is circled in red.

- Wprowadź swoją nazwę użytkownika i hasło w części “Enter Account Information” (Wprowadź informacje dot. konta) i kliknij „Next” (Dalej)

The screenshot shows a window titled "AkzoNobel CR Color Manager Configuration". The main heading is "Enter Account Information." Below this, there are several input fields and informational text. The fields for "Account Number", "Account Password", and "Retype Account Password" are circled in red. The "Account Number" field contains "CR_CUST_*****". The "Account Password" and "Retype Account Password" fields contain "*****". To the right of these fields, there is an information icon and text: "Please reference the 'User Name AkzoNobel Car Refinishes' delivered to you per email. If you are uncertain about the email, please contact your AkzoNobel CR representative." Below these fields, there are two more fields: "Account Brand Key" and "Account Feature Key", both containing "*****". To the right of these fields, there is another information icon and text: "Please reference the 'Mixit Validation Key' delivered to you per email. If you are uncertain about the email, please contact your AkzoNobel CR representative." At the bottom right, there are two buttons: "Back" and "Next".