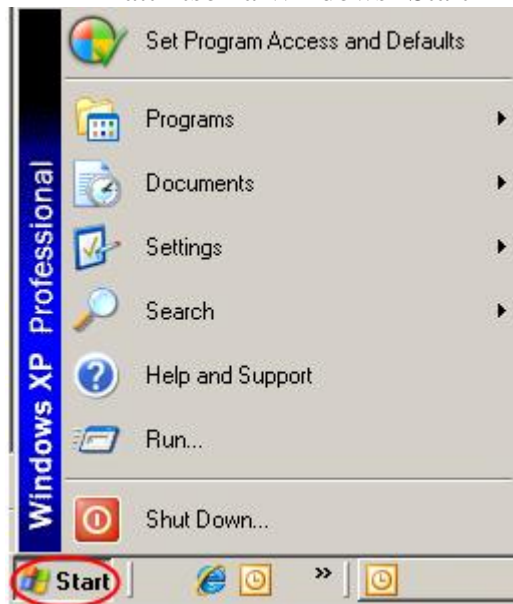
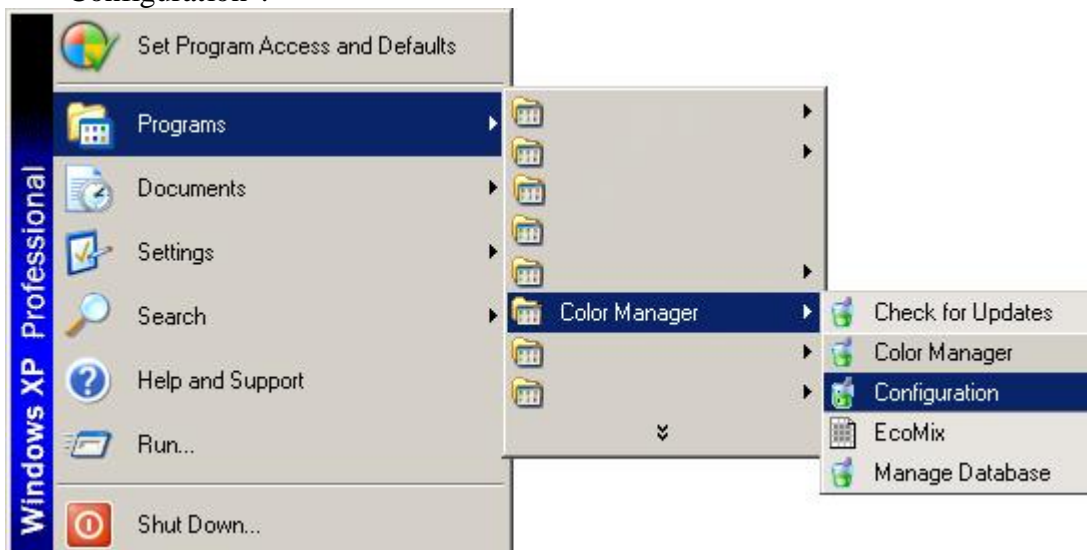


Kövesse a következő egyszerű lépéseket a felhasználói fiókjához való hozzáféréshez:

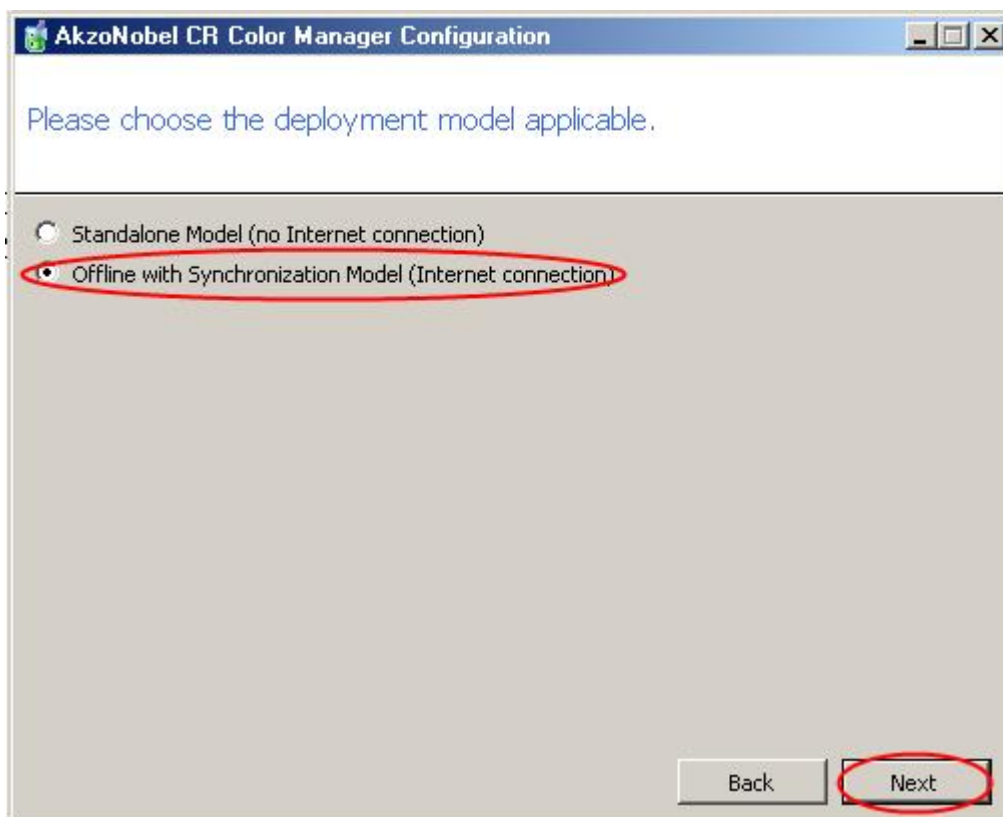
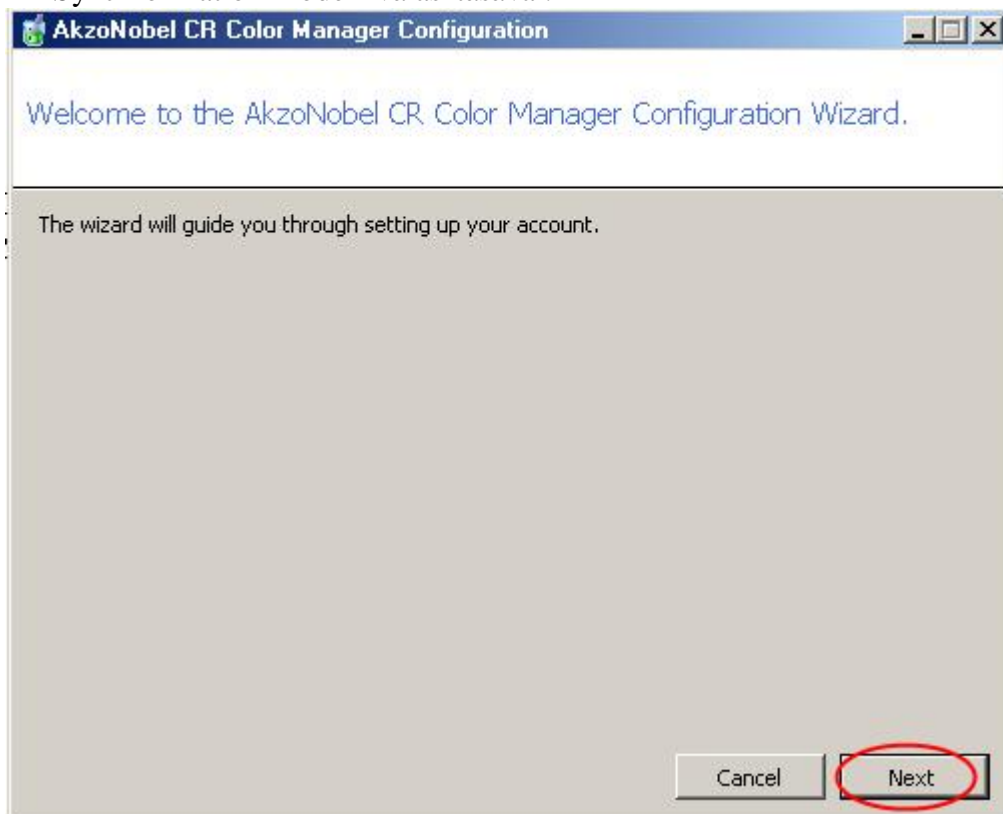
- Kattintson a Windows "Start" menüre



- Kattintson a következőkre: "Programs", majd "Color Manager", majd "Configuration".



- Folytassa itt: a "Configuration" menüben a "Next", majd az "Offline with Synchronization Model" választásával.



- Ne változtassa meg a proxy beállításait, és nyomja meg: "Next"

The screenshot shows a window titled "AkzoNobel CR Color Manager Configuration". The main heading is "Configure proxy server settings." Below this, there are two radio button options: "No Proxy Server" (which is selected) and "Use Proxy Server". At the bottom right of the window, there are two buttons: "Back" and "Next". The "Next" button is circled in red.

- Írja be felhasználónevét és jelszavát ide: "Enter Account Information" majd nyomja meg: "Next"

The screenshot shows a window titled "AkzoNobel CR Color Manager Configuration". The main heading is "Enter Account Information." Below this, there are several input fields and informational text. The "Account Number" field contains "CR_CUST_*****". The "Account Password" and "Retype Account Password" fields both contain "*****". The "Account Brand Key" and "Account Feature Key" fields both contain "*****". To the right of the password fields, there is an information icon and text: "Please reference the 'User Name AkzoNobel Car Refinishes' delivered to you per email. If you are uncertain about the email, please contact your AkzoNobel CR representative." Below the keys, there is another information icon and text: "Please reference the 'Mixit Validation Key' delivered to you per email. If you are uncertain about the email, please contact your AkzoNobel CR representative." At the bottom right of the window, there are two buttons: "Back" and "Next".